

CD98 Polyclonal Antibody

Description

Product type	Primary Antibody
Code	BT-AP01566
Host	Rabbit
Isotype	IgG
Size	20ul, 50ul, 100ul
Immunogen	The antiserum was produced against synthesized peptide derived from the C-terminal region of human SLC3A2. AA range:491-540
Mol wt	67994
Species reactivity	Human, Mouse, Rat
Clonality	Polyclonal
Recommended application	WB, ELISA
Concentration	1 mg/ml
Full name	CD98 Antibody
Synonyms	SLC3A2; MDU1; 4F2 cell-surface antigen heavy chain; 4F2hc; 4F2 heavy chain antigen; Lymphocyte activation antigen 4F2 large subunit; CD98

This product is for research use only, not for use in human, therapeutic or diagnostic procedure.

Background

SLC3A2 is a member of the solute carrier family and encodes a cell surface, transmembrane protein. The solute carrier family 3 member 2 exists as the heavy chain of a heterodimer, covalently bound through di-sulfide bonds to one of several possible light chains. The encoded transporter plays a role in regulation of intracellular calcium levels and transports L-type amino acids. Alternatively spliced transcript variants, encoding different isoforms, have been characterized.

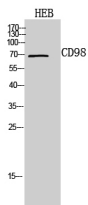
Recommended Dilution

WB: 1: 500 - 1: 2000

ELISA: 1: 10000

Not yet tested in other applications.

Images



Western Blot analysis of HEB cells using CD98 Polyclonal Antibody. Secondary antibody was diluted at 1:20000

Storage

-20°C for one year