

Cdc2 Polyclonal Antibody

Description

Product type	Primary Antibody
Code	BT-AP01572
Host	Rabbit
Isotype	IgG
Size	20ul, 50ul, 100ul
Immunogen	The antiserum was produced against synthesized peptide derived from human CDC2. AA range:131-180
Mol wt	34095
Species reactivity	Human, Mouse, Rat
Clonality	Polyclonal
Recommended application	WB, ELISA
Concentration	1 mg/ml
Full name	Cdc2 Antibody
Synonyms	CDK1; CDC2; CDC28A; CDKN1; P34CDC2; Cyclin-dependent kinase 1; CDK1; Cell division control protein 2 homolog; Cell division protein kinase 1; p34 protein kinase

This product is for research use only, not for use in human, therapeutic or diagnostic procedure.

Background

Cyclin dependent kinase 1 encoded by CDK1 is a member of the Ser/Thr protein kinase family. Cyclin dependent kinase 1 is a catalytic subunit of the highly conserved protein kinase complex known as M-phase promoting factor (MPF), which is essential for G1/S and G2/M phase transitions of eukaryotic cell cycle. Mitotic cyclins stably associate with this protein and function as regulatory subunits. The kinase activity of this protein is controlled by cyclin accumulation and destruction through the cell cycle. The phosphorylation and dephosphorylation of this protein also play important regulatory roles in cell cycle control. Alternatively spliced transcript variants encoding different isoforms have been found for this CDK1.

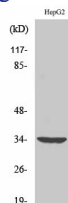
Recommended Dilution

WB: 1: 500 - 1: 2000

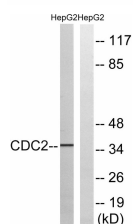
ELISA: 1: 10000

Not yet tested in other applications.

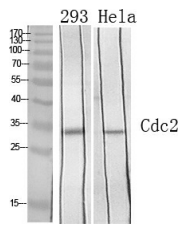
Images



Western Blot analysis of HepG2 cells using Cdc2 Polyclonal Antibody diluted at 1:1000



Western blot analysis of lysates from HepG2 cells, using CDC2 Antibody. The lane on the right is blocked with the synthesized peptide.



Western Blot analysis of various cells using Cdc2 Polyclonal Antibody diluted at 1:1000

Storage

-20°C for one year

501 Changsheng S Rd, Nanhu Dist, Jiaxing, Zhejiang, China

Tel: 86 21 31007137 | E-mail: save@bt-laboratory.com | www.bt-laboratory.com