

Cdc20 Polyclonal Antibody

Description

Product type	Primary Antibody
Code	BT-AP01573
Host	Rabbit
Isotype	IgG
Size	20ul, 50ul, 100ul
Immunogen	The antiserum was produced against synthesized peptide derived from human p55CDC. AA range:81-130
Mol wt	54723
Species reactivity	Human, Mouse, Rat
Clonality	Polyclonal
Recommended application	WB, IHC-p, ELISA
Concentration	1 mg/ml
Full name	Cdc20 Antibody
Synonyms	CDC20; Cell division cycle protein 20 homolog; p55CDC

This product is for research use only, not for use in human, therapeutic or diagnostic procedure.

Background

CDC20 appears to act as a regulatory protein interacting with several other proteins at multiple points in the cell cycle. It is required for two microtubule-dependent processes, nuclear movement prior to anaphase and chromosome separation.

Recommended Dilution

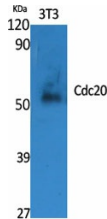
WB: 1: 500 - 1: 2000

IHC: 1: 100 - 1: 300

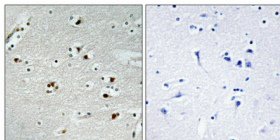
ELISA: 1: 20000

Not yet tested in other applications.

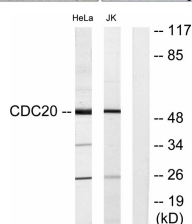
Images



Western Blot analysis of various cells using Cdc20 Polyclonal Antibody diluted at 1:2000

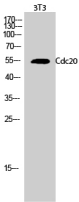


Immunohistochemical analysis of paraffin-embedded Human brain. Antibody was diluted at 1:100(4° overnight). High-pressure and temperature Tris-EDTA,pH8.0 was used for antigen retrieval. Negative contrl (right) obtained from antibody was pre-absorbed by immunogen peptide.



Western blot analysis of lysates from Jurkat and HeLa cells, using p55CDC Antibody. The lane on the right is blocked with the synthesized peptide.

Western Blot analysis of 3T3 cells using Cdc20 Polyclonal Antibody diluted at 1:2000



Storage

-20°C for one year

501 Changsheng S Rd, Nanhu Dist, Jiaxing, Zhejiang, China
Tel: 86 21 31007137 | E-mail: save@bt-laboratory.com | www.bt-laboratory.com