

Cdc25C Polyclonal Antibody

Description

Product type	Primary Antibody
Code	BT-AP01582
Host	Rabbit
Isotype	IgG
Size	20ul, 50ul, 100ul
Immunogen	The antiserum was produced against synthesized peptide derived from human CDC25C. AA range:14-63
Mol wt	53365
Species reactivity	Human
Clonality	Polyclonal
Recommended application	IHC-p, IF, ELISA
Concentration	1 mg/ml
Full name	Cdc25C Antibody
Synonyms	CDC25C; M-phase inducer phosphatase 3; Dual specificity phosphatase Cdc25C

This product is for research use only, not for use in human, therapeutic or diagnostic procedure.

Background

CDC25C (cell division cycle 25C) encodes a conserved protein that plays a key role in the regulation of cell division. The encoded protein directs dephosphorylation of cyclin B-bound CDC2 and triggers entry into mitosis. It also suppresses p53-induced growth arrest. Multiple alternatively spliced transcript variants of CDC25C have been described.

Recommended Dilution

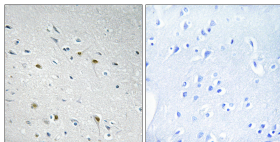
IHC: 1: 100 - 1: 300

IF: 1: 200 - 1: 1000

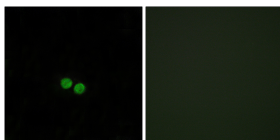
ELISA: 1: 5000

Not yet tested in other applications.

Images



Immunohistochemistry analysis of paraffin-embedded human brain tissue, using CDC25C Antibody. The picture on the right is blocked with the synthesized peptide.



Immunofluorescence analysis of HepG2 cells, using CDC25C Antibody. The picture on the right is blocked with the synthesized peptide.

Storage

-20°C for one year