

## Cdc27 Polyclonal Antibody

### Description

<b>Product type</b>	Primary Antibody
<b>Code</b>	BT-AP01584
<b>Host</b>	Rabbit
<b>Isotype</b>	IgG
<b>Size</b>	20ul, 50ul, 100ul
<b>Immunogen</b>	The antiserum was produced against synthesized peptide derived from human H-NUC. AA range:361-410
<b>Mol wt</b>	91867
<b>Species reactivity</b>	Human, Mouse, Rat
<b>Clonality</b>	Polyclonal
<b>Recommended application</b>	WB, IHC-p, ELISA
<b>Concentration</b>	1 mg/ml
<b>Full name</b>	Cdc27 Antibody
<b>Synonyms</b>	CDC27; ANAPC3; D0S1430E; D17S978E; Cell division cycle protein 27 homolog; Anaphase-promoting complex subunit 3; APC3; CDC27 homolog; CDC27Hs; H-NUC

**This product is for research use only, not for use in human, therapeutic or diagnostic procedure.**

### Background

The protein encoded by CDC27 shares strong similarity with *Saccharomyces cerevisiae* protein Cdc27, and CDC27 product of *Schizosaccharomyces pombe* nuc 2. Cell division cycle 27 is a component of the anaphase-promoting complex (APC), which is composed of eight protein subunits and is highly conserved in eukaryotic cells. This complex catalyzes the formation of cyclin B-ubiquitin conjugate, which is responsible for the ubiquitin-mediated proteolysis of B-type cyclins. The protein encoded by this gene and three other members of the APC complex contain tetratricopeptide (TPR) repeats, which are important for protein-protein interactions. This protein was shown to interact with mitotic checkpoint proteins including Mad2, p53CDC and BUBR1, and it may thus be involved in controlling the timing of mitosis. Alternative splicing of this gene results in multiple transcript variants. Related pseudogenes have been identified on chromosomes 2, 22 and Y.

### Recommended Dilution

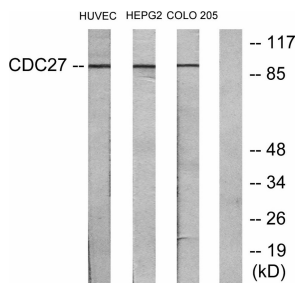
WB: 1: 500 - 1: 2000

IHC: 1: 100 - 1: 300

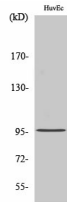
ELISA: 1: 5000

Not yet tested in other applications.

### Images



Western blot analysis of lysates from HUVEC, HepG2, and COLO205 cells, using H-NUC Antibody.  
The lane on the right is blocked with the synthesized peptide.



Western Blot analysis of various cells using Cdc27 Polyclonal Antibody

### Storage

-20°C for one year

501 Changsheng S Rd, Nanhu Dist, Jiaxing, Zhejiang, China

Tel: 86 21 31007137 | E-mail: [save@bt-laboratory.com](mailto:save@bt-laboratory.com) | [www.bt-laboratory.com](http://www.bt-laboratory.com)