

Cdc37L1 Polyclonal Antibody

Description

Product type	Primary Antibody
Code	BT-AP01589
Host	Rabbit
Isotype	IgG
Size	20ul, 50ul, 100ul
Immunogen	Synthesized peptide derived from Cdc37L1 . at AA range: 80-160
Mol wt	38835
Species reactivity	Human, Rat
Clonality	Polyclonal
Recommended application	WB, ELISA
Concentration	1 mg/ml
Full name	Cdc37L1 Antibody
Synonyms	CDC37L1; CDC37B; HARC; Hsp90 co-chaperone Cdc37-like 1; Hsp90-associating relative of Cdc37

This product is for research use only, not for use in human, therapeutic or diagnostic procedure.

Background

CDC37L1 is a cytoplasmic phosphoprotein that exists in complex with HSP90 (HSPCA; MIM 140571) as well as several other proteins involved in HSP90-mediated protein folding.

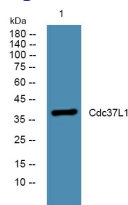
Recommended Dilution

WB: 1: 500 - 1: 2000

ELISA: 1: 40000

Not yet tested in other applications.

Images



Western blot analysis of lysates from KB cells, primary antibody was diluted at 1:1000, 4°over night

Storage

-20°C for one year