

Cdc40 Polyclonal Antibody

Description

Product type	Primary Antibody
Code	BT-AP01590
Host	Rabbit
Isotype	IgG
Size	20ul, 50ul, 100ul
Immunogen	The antiserum was produced against synthesized peptide derived from human CDC40. AA range:179-228
Mol wt	65521
Species reactivity	Human, Mouse, Rat
Clonality	Polyclonal
Recommended application	WB, IHC-p, ELISA
Concentration	1 mg/ml
Full name	Cdc40 Antibody
Synonyms	CDC40; EHB3; PRP17; PRPF17; Pre-mRNA-processing factor 17; Cell division cycle 40 homolog; EH-binding protein 3; Ehb3; PRP17 homolog; hPRP17

This product is for research use only, not for use in human, therapeutic or diagnostic procedure.

Background

Pre-mRNA splicing occurs in two sequential transesterification steps. The protein encoded by CDC40 (cell division cycle 40) is found to be essential for the catalytic step II in pre-mRNA splicing process. It is found in the spliceosome, and contains seven WD repeats, which function in protein-protein interactions. This protein has a sequence similarity to yeast Prp17 protein, which functions in two different cellular processes: pre-mRNA splicing and cell cycle progression. It suggests that this protein may play a role in cell cycle progression.

Recommended Dilution

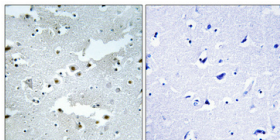
WB: 1: 500 - 1: 2000

IHC: 1: 100 - 1: 300

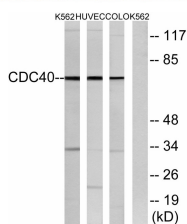
ELISA: 1: 40000

Not yet tested in other applications.

Images



Immunohistochemical analysis of paraffin-embedded Human brain. Antibody was diluted at 1:100(4° overnight). High-pressure and temperature Tris-EDTA,pH8.0 was used for antigen retrieval. Negative contrl (right) obtained from antibody was pre-absorbed by immunogen peptide.



Western blot analysis of lysates from K562, COLO, and HUVEC cells, using CDC40 Antibody. The lane on the right is blocked with the synthesized peptide.

Storage

-20°C for one year

501 Changsheng S Rd, Nanhu Dist, Jiaxing, Zhejiang, China

Tel: 86 21 31007137 | E-mail: save@bt-laboratory.com | www.bt-laboratory.com