

Cdc42EP3 Polyclonal Antibody

Description

Product type	Primary Antibody
Code	BT-AP01593
Host	Rabbit
Isotype	IgG
Size	20ul, 50ul, 100ul
Immunogen	Synthesized peptide derived from the N-terminal region of human Cdc42EP3.
Mol wt	27678
Species reactivity	Human, Mouse, Rat
Clonality	Polyclonal
Recommended application	WB, ELISA
Concentration	1 mg/ml
Full name	Cdc42EP3 Antibody
Synonyms	CDC42EP3; BORG2; CEP3; Cdc42 effector protein 3; Binder of Rho GTPases 2; MSE55-related Cdc42-binding protein

This product is for research use only, not for use in human, therapeutic or diagnostic procedure.

Background

CDC42EP3 encodes a member of a small family of guanosine triphosphate (GTP) metabolizing proteins that contain a CRIB (Cdc42, Rac interactive binding) domain. Members of this family of proteins act as effectors of CDC42 function. The CDC42 effector protein 3 is involved in actin cytoskeleton re-organization during cell shape changes, including pseudopodia formation. A pseudogene of this gene is found on chromosome 19. Alternative splicing results in multiple transcript variants.

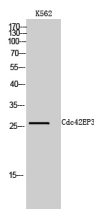
Recommended Dilution

WB: 1: 500 - 1: 2000

ELISA: 1: 40000

Not yet tested in other applications.

Images



Western Blot analysis of K562 cells using Cdc42EP3 Polyclonal Antibody

Storage

-20°C for one year