

Cdc42EP4 Polyclonal Antibody

Description

Product type	Primary Antibody
Code	BT-AP01594
Host	Rabbit
Isotype	IgG
Size	20ul, 50ul, 100ul
Immunogen	The antiserum was produced against synthesized peptide derived from human BORG4. AA range:201-250
Mol wt	37980
Species reactivity	Human
Clonality	Polyclonal
Recommended application	WB, IHC-p, ELISA
Concentration	1 mg/ml
Full name	Cdc42EP4 Antibody
Synonyms	CDC42EP4; BORG4; CEP4; Cdc42 effector protein 4; Binder of Rho GTPases 4

This product is for research use only, not for use in human, therapeutic or diagnostic procedure.

Background

The product of CDC42EP4 is a member of the CDC42-binding protein family. Members of this family interact with Rho family GTPases and regulate the organization of the actin cytoskeleton. This protein has been shown to bind both CDC42 and TC10 GTPases in a GTP-dependent manner. When overexpressed in fibroblasts, this protein was able to induce pseudopodia formation, which suggested a role in inducing actin filament assembly and cell shape control.

Recommended Dilution

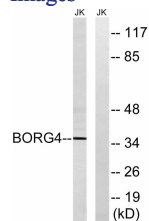
WB: 1: 500 - 1: 2000

IHC: 1: 100 - 1: 300

ELISA: 1: 20000

Not yet tested in other applications.

Images



Western blot analysis of lysates from Jurkat cells, using BORG4 Antibody. The lane on the right is blocked with the synthesized peptide.

Storage

-20°C for one year