

Cdc7 Polyclonal Antibody

Description

Product type	Primary Antibody
Code	BT-AP01603
Host	Rabbit
Isotype	IgG
Size	20ul, 50ul, 100ul
Immunogen	The antiserum was produced against synthesized peptide derived from human CDC7. AA range:1-50
Mol wt	63888
Species reactivity	Human
Clonality	Polyclonal
Recommended application	WB, IHC-p, ELISA
Concentration	1 mg/ml
Full name	Cdc7 Antibody
Synonyms	CDC7; CDC7L1; Cell division cycle 7-related protein kinase; CDC7-related kinase; HsCdc7; huCdc7

This product is for research use only, not for use in human, therapeutic or diagnostic procedure.

Background

CDC7 (cell division cycle 7) encodes a cell division cycle protein with kinase activity that is critical for the G1/S transition. The yeast homolog is also essential for initiation of DNA replication as cell division occurs. Overexpression of this gene product may be associated with neoplastic transformation for some tumors. Multiple alternatively spliced transcript variants that encode the same protein have been detected.

Recommended Dilution

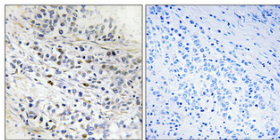
WB: 1: 500 - 1: 2000

IHC: 1: 100 - 1: 300

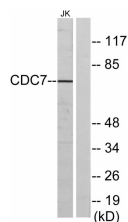
ELISA: 1: 5000

Not yet tested in other applications.

Images



Immunohistochemical analysis of paraffin-embedded Human lung cancer. Antibody was diluted at 1:100(4° overnight). High-pressure and temperature Tris-EDTA,pH8.0 was used for antigen retrieval. Negative contrl (right) obtained from antibody was pre-absorbed by immunogen peptide.



Western blot analysis of lysates from Jurkat cells, using CDC7 Antibody. The lane on the right is blocked with the synthesized peptide.

Storage

-20°C for one year