

CdcA3 Polyclonal Antibody

Description

Product type	Primary Antibody
Code	BT-AP01604
Host	Rabbit
Isotype	IgG
Size	20ul, 50ul, 100ul
Immunogen	The antiserum was produced against synthesized peptide derived from human CDCA3. AA range:219-268
Mol wt	28998
Species reactivity	Human, Mouse, Rat
Clonality	Polyclonal
Recommended application	WB, IHC-p, IF, ELISA
Concentration	1 mg/ml
Full name	CdcA3 Antibody
Synonyms	CDCA3; C8; GRCC8; TOME1; Cell division cycle-associated protein 3; Gene-rich cluster protein C8; Trigger of mitotic entry protein 1; TOME-1

This product is for research use only, not for use in human, therapeutic or diagnostic procedure.

Background

Cell cycle events are regulated by the sequential activation and deactivation of cyclin dependent kinases (Cdks) and by the proteolysis of cyclins. The cell division control (Cdc) genes are required at various points in the cell cycle. CdcA3 (Cell division cycle-associated protein 3), also known as TOME1 (Trigger of mitotic entry protein 1) and GRCC8 (Gene-rich cluster protein C8), is a 268 amino acid cytoplasmic protein that is required for entry into mitosis. By participating with E3 ligase complexes, CdcA3 is involved in ubiquitination and degradation of the mitosis-inhibitory kinase Wee 1, leading to the dephosphorylation of Cdc2 in the late G2 phase. CdcA3 itself is targeted for destruction by anaphase promoting complex (APC) in the G1 phase of the cell cycle, then allowing for Wee 1 accumulation during interphase.

Recommended Dilution

WB: 1: 500 - 1: 2000

IHC: 1: 100 - 1: 300

IF: 1: 200 - 1: 1000

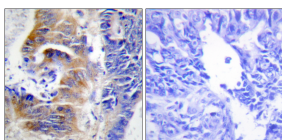
ELISA: 1: 5000

Not yet tested in other applications.

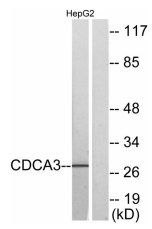
Images



Western Blot analysis of various cells using CdcA3 Polyclonal Antibody



Immunohistochemistry analysis of paraffin-embedded human colon carcinoma tissue, using CDCA3 Antibody. The picture on the right is blocked with the synthesized peptide.



Western blot analysis of lysates from HepG2 cells, using CDCA3 Antibody. The lane on the right is blocked with the synthesized peptide.

Storage

-20°C for one year

501 Changsheng S Rd, Nanhu Dist, Jiaxing, Zhejiang, China

Tel: 86 21 31007137 | E-mail: save@bt-laboratory.com | www.bt-laboratory.com