

CdcA4 Polyclonal Antibody

Description

Product type	Primary Antibody
Code	BT-AP01605
Host	Rabbit
Isotype	IgG
Size	20ul, 50ul, 100ul
Immunogen	The antiserum was produced against synthesized peptide derived from human CDCA4. AA range:121-170
Mol wt	26114
Species reactivity	Human, Mouse
Clonality	Polyclonal
Recommended application	IHC-p, IF, WB, ELISA
Concentration	1 mg/ml
Full name	CdcA4 Antibody
Synonyms	CDCA4; HEPP; Cell division cycle-associated protein 4; Hematopoietic progenitor protein

This product is for research use only, not for use in human, therapeutic or diagnostic procedure.

Background

CDCA4 (cell division cycle associated 4) encodes a protein that belongs to the E2F family of transcription factors. This protein regulates E2F-dependent transcriptional activation and cell proliferation, mainly through the E2F/retinoblastoma protein pathway. It also functions in the regulation of JUN oncogene expression. This protein shows distinctive nuclear-mitotic apparatus distribution, it is involved in spindle organization from prometaphase, and may also play a role as a midzone factor involved in chromosome segregation or cytokinesis. Two alternatively spliced transcript variants encoding the same protein have been noted for CDCA4. Two pseudogenes have also been identified on chromosome 1.

Recommended Dilution

WB: 1: 500 - 2000

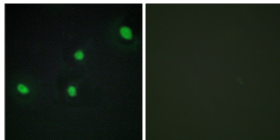
IF: 1: 200 - 1: 1000

ELISA: 1: 5000

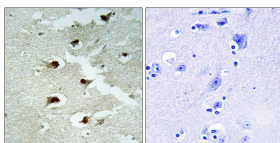
IHC: 1: 100 - 1: 300

Not yet tested in other applications.

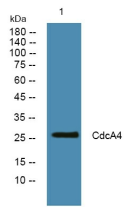
Images



Immunofluorescence analysis of HepG2 cells, using CDCA4 Antibody. The picture on the right is blocked with the synthesized peptide.



Immunohistochemistry analysis of paraffin-embedded human brain tissue, using CDCA4 Antibody. The picture on the right is blocked with the synthesized peptide.



Western blot analysis of lysates from A431 cells, primary antibody was diluted at 1:1000, 4° over night

Storage

-20°C for one year

501 Changsheng S Rd, Nanhu Dist, Jiaxing, Zhejiang, China

Tel: 86 21 31007137 | E-mail: save@bt-laboratory.com | www.bt-laboratory.com