

## CdcA7 Polyclonal Antibody

### Description

<b>Product type</b>	Primary Antibody
<b>Code</b>	BT-AP01606
<b>Host</b>	Rabbit
<b>Isotype</b>	IgG
<b>Size</b>	20ul, 50ul, 100ul
<b>Immunogen</b>	The antiserum was produced against synthesized peptide derived from human CDCA7. AA range:141-190
<b>Mol wt</b>	42573
<b>Species reactivity</b>	Human, Mouse, Rat
<b>Clonality</b>	Polyclonal
<b>Recommended application</b>	WB, ELISA
<b>Concentration</b>	1 mg/ml
<b>Full name</b>	CdcA7 Antibody
<b>Synonyms</b>	CDCA7; JPO1; Cell division cycle-associated protein 7; Protein JPO1

**This product is for research use only, not for use in human, therapeutic or diagnostic procedure.**

### Background

CDCA7 (cell division cycle associated 7) was identified as a c-Myc responsive gene, and behaves as a direct c-Myc target gene. Overexpression of CDCA7 is found to enhance the transformation of lymphoblastoid cells, and it complements a transformation-defective Myc Box II mutant, suggesting its involvement in c-Myc-mediated cell transformation. Two alternatively spliced transcript variants encoding distinct isoforms have been reported.

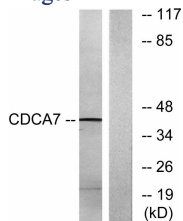
### Recommended Dilution

WB: 1: 500 - 1: 2000

ELISA: 1: 20000

Not yet tested in other applications.

### Images



Western blot analysis of lysates from K562 cells, using CDCA7 Antibody. The lane on the right is blocked with the synthesized peptide.

### Storage

-20°C for one year