

CDCP1 Polyclonal Antibody

Description

Product type	Primary Antibody
Code	BT-AP01609
Host	Rabbit
Isotype	IgG
Size	20ul, 50ul, 100ul
Immunogen	The antiserum was produced against synthesized peptide derived from human CDCP1. AA range:652-701
Mol wt	42573
Species reactivity	Human, Mouse
Clonality	Polyclonal
Recommended application	WB, ELISA
Concentration	1 mg/ml
Full name	CDCP1 Antibody
Synonyms	CDCP1; TRASK; CUB domain-containing protein 1; Membrane glycoprotein gp140; Subtractive immunization M plus HEp3-associated 135 kDa protein; SIMA135; Transmembrane and associated with src kinases; CD

This product is for research use only, not for use in human, therapeutic or diagnostic procedure.

Background

CDCA7 (cell division cycle associated 7) was identified as a c-Myc responsive gene, and behaves as a direct c-Myc target gene. Overexpression of CDCA7 is found to enhance the transformation of lymphoblastoid cells, and it complements a transformation-defective Myc Box II mutant, suggesting its involvement in c-Myc-mediated cell transformation. Two alternatively spliced transcript variants encoding distinct isoforms have been reported.

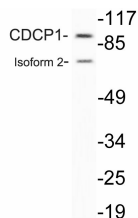
Recommended Dilution

WB: 1: 500 - 1: 2000

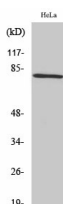
ELISA: 1: 10000

Not yet tested in other applications.

Images



Western blot analysis of lysate from HeLa cells, using CDCP1 antibody.



Western Blot analysis of various cells using CDCP1 Polyclonal Antibody

Storage

-20°C for one year

501 Changsheng S Rd, Nanhu Dist, Jiaxing, Zhejiang, China

Tel: 86 21 31007137 | E-mail: save@bt-laboratory.com | www.bt-laboratory.com