

CDHF10 Polyclonal Antibody

Description

| | |
|--------------------------------|--|
| Product type | Primary Antibody |
| Code | BT-AP01613 |
| Host | Rabbit |
| Isotype | IgG |
| Size | 20ul, 50ul, 100ul |
| Immunogen | The antiserum was produced against synthesized peptide derived from human CELSR2. AA range:2781-2830 |
| Mol wt | 317453 |
| Species reactivity | Human, Mouse, Rat |
| Clonality | Polyclonal |
| Recommended application | IHC-p, IF, ELISA |
| Concentration | 1 mg/ml |
| Full name | CDHF10 Antibody |
| Synonyms | CELSR2; CDHF10; EGFL2; KIAA0279; MEGF3; Cadherin EGF LAG seven-pass G-type receptor 2; Cadherin family member 10; Epidermal growth factor-like protein 2; EGF-like protein 2; Flamingo homolog 3; Multip |

This product is for research use only, not for use in human, therapeutic or diagnostic procedure.

Background

The cadherin EGF LAG seven-pass G-type receptor 2 encoded by CELSR2 is a member of the flamingo subfamily, part of the cadherin superfamily. The flamingo subfamily consists of nonclassic-type cadherins; a subpopulation that does not interact with catenins. The flamingo cadherins are located at the plasma membrane and have nine cadherin domains, seven epidermal growth factor-like repeats and two laminin A G-type repeats in their ectodomain. They also have seven transmembrane domains, a characteristic unique to this subfamily. It is postulated that these proteins are receptors involved in contact-mediated communication, with cadherin domains acting as homophilic binding regions and the EGF-like domains involved in cell adhesion and receptor-ligand interactions. The specific function of this particular member has not been determined.

Recommended Dilution

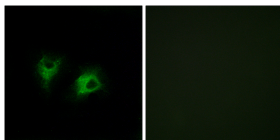
IHC: 1: 100 - 1: 300

IF: 1: 200 - 1: 1000

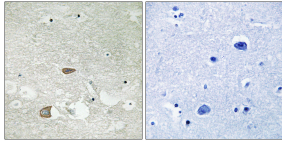
ELISA: 1: 5000

Not yet tested in other applications.

Images



Immunofluorescence analysis of COS7 cells, using CELSR2 Antibody. The picture on the right is blocked with the synthesized peptide.



Immunohistochemistry analysis of paraffin-embedded human brain tissue, using CELSR2 Antibody.
The picture on the right is blocked with the synthesized peptide.

Storage

-20°C for one year

501 Changsheng S Rd, Nanhu Dist, Jiaxing, Zhejiang, China

Tel: 86 21 31007137 | E-mail: save@bt-laboratory.com | www.bt-laboratory.com