

CDHF9 Polyclonal Antibody

Description

Product type	Primary Antibody
Code	BT-AP01615
Host	Rabbit
Isotype	IgG
Size	20ul, 50ul, 100ul
Immunogen	The antiserum was produced against synthesized peptide derived from human CELSR1. AA range:921-970
Mol wt	329486
Species reactivity	Human, Mouse, Rat
Clonality	Polyclonal
Recommended application	IF, ELISA
Concentration	1 mg/ml
Full name	CDHF9 Antibody
Synonyms	CELSR1; CDHF9; FMI2; Cadherin EGF LAG seven-pass G-type receptor 1; Cadherin family member 9; Flamingo homolog 2; hFmi2

This product is for research use only, not for use in human, therapeutic or diagnostic procedure.

Background

The protein encoded by CELSR1 (cadherin EGF LAG seven-pass G-type receptor 1) is a member of the flamingo subfamily, part of the cadherin superfamily. The flamingo subfamily consists of nonclassic-type cadherins; a subpopulation that does not interact with catenins. The flamingo cadherins are located at the plasma membrane and have nine cadherin domains, seven epidermal growth factor-like repeats and two laminin A G-type repeats in their ectodomain. They also have seven transmembrane domains, a characteristic unique to this subfamily. It is postulated that these proteins are receptors involved in contact-mediated communication, with cadherin domains acting as homophilic binding regions and the EGF-like domains involved in cell adhesion and receptor-ligand interactions. This particular member is a developmentally regulated, neural-specific gene which plays an unspecified role in early embryogenesis.

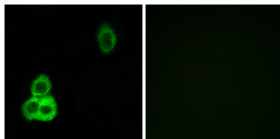
Recommended Dilution

IF: 1: 200 - 1: 1000

ELISA: 1: 10000

Not yet tested in other applications.

Images



Immunofluorescence analysis of HepG2 cells, using CELSR1 Antibody. The picture on the right is blocked with the synthesized peptide.

Storage

-20°C for one year