

## Cdk11A/B Polyclonal Antibody

### Description

Product type	Primary Antibody
Code	BT-AP01620
Host	Rabbit
Isotype	IgG
Size	20ul, 50ul, 100ul
Immunogen	Synthesized peptide derived from Cdk11A/B . at AA range: 190-270
Mol wt	90974
Species reactivity	Human
Clonality	Polyclonal
Recommended application	WB, ELISA
Concentration	1 mg/ml
Full name	Cdk11A/B Antibody
Synonyms	CDK11A; CDC2L2; CDC2L3; PITSLREB; Cyclin-dependent kinase 11A; Cell division cycle 2-like protein kinase 2; Cell division protein kinase 11A; Galactosyltransferase-associated protein kinase p58/GTA; P

This product is for research use only, not for use in human, therapeutic or diagnostic procedure.

### Background

CDK11A (cyclin dependent kinase 11A) encodes a member of the serine/threonine protein kinase family. Members of this kinase family are known to be essential for eukaryotic cell cycle control. Due to a segmental duplication, CDK11A shares very high sequence identity with a neighboring gene. These two genes are frequently deleted or altered in neuroblastoma. The protein kinase encoded by CDK11A can be cleaved by caspases and may play a role in cell apoptosis. Alternative splicing results in multiple transcript variants.

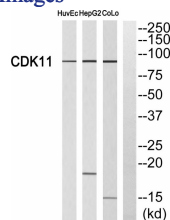
### Recommended Dilution

WB: 1: 500 - 1: 2000

ELISA: 1: 10000

Not yet tested in other applications.

### Images



Western blot analysis of CDK11 Antibody. The lane on the right is blocked with the CDK11 peptide.

### Storage

-20°C for one year