

CDKAL1 Polyclonal Antibody

Description

Product type	Primary Antibody
Code	BT-AP01640
Host	Rabbit
Isotype	IgG
Size	20ul, 50ul, 100ul
Immunogen	The antiserum was produced against synthesized peptide derived from human CDKAL. AA range:10-59
Mol wt	65111
Species reactivity	Human, Rat
Clonality	Polyclonal
Recommended application	WB, ELISA
Concentration	1 mg/ml
Full name	CDKAL1 Antibody
Synonyms	CDKAL1; Threonylcarbamoyladenosine tRNA methyltransferase; CDK5 regulatory subunit-associated protein 1-like 1; tRNA-t(6)A37 methyltransferase

This product is for research use only, not for use in human, therapeutic or diagnostic procedure.

Background

The protein encoded by CDKAL1 (CDK5 regulatory subunit associated protein 1 like 1) is a member of the methyltransferase family. The function of CDKAL1 is not known. Genome-wide association studies have linked single nucleotide polymorphisms in an intron of this gene with susceptibility to type 2 diabetes.

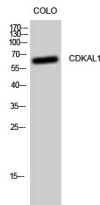
Recommended Dilution

WB: 1: 500 - 1: 2000

ELISA: 1: 40000

Not yet tested in other applications.

Images



Western Blot analysis of CoLo cells using CDKAL1 Polyclonal Antibody

Storage

-20°C for one year