

STAM2(Phospho Tyr192) Polyclonal Antibody

Description

Product type	Primary Antibody
Code	BT-AP01642
Host	Rabbit
Isotype	IgG
Size	20ul, 50ul, 100ul
Immunogen	The antiserum was produced against synthesized peptide derived from human STAM2 around the phosphorylation site of Tyr192. AA range:161-210
Mol wt	58164
Species reactivity	Human, Mouse
Clonality	Polyclonal
Recommended application	WB, IHC-p, IF, ELISA
Concentration	1 mg/ml
Full name	Signal transducing adapter molecule 2
Synonyms	Signal transducing adapter molecule 2; STAM2; HBP; Signal transducing adapter molecule 2; STAM-2; Hrs-binding protein

This product is for research use only, not for use in human, therapeutic or diagnostic procedure.

Background

The protein encoded by this gene is closely related to STAM| an adaptor protein involved in the downstream signaling of cytokine receptors| both of which contain a SH3 domain and the immunoreceptor tyrosine-based activation motif (ITAM). Similar to STAM| this protein acts downstream of JAK kinases| and is phosphorylated in response to cytokine stimulation. This protein and STAM thus are thought to exhibit compensatory effects on the signaling pathway downstream of JAK kinases upon cytokine stimulation.

Recommended Dilution

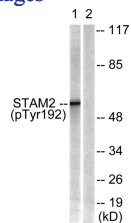
WB: 1: 500 - 1: 2000

IHC-p: 1: 100 - 1: 300

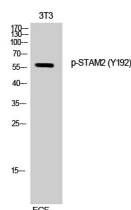
ELISA: 1: 10000

Not yet tested in other applications.

Images



Western Blot analysis of 3T3 cells using Phospho-STAM2 (Y192) Polyclonal Antibody



Western blot analysis of lysates from NIH/3T3 cells treated with EGF 200ng/ml 30', using STAM2 (Phospho-Tyr192) Antibody. The lane on the right is blocked with the phospho peptide.

Storage

-20°C for 1 year

501 Changsheng S Rd, Nanhu Dist, Jiaxing, Zhejiang, China

Tel: 86 21 31007137 | E-mail: save@bt-laboratory.com | www.bt-laboratory.com