

## Stat3 (Acetyl Lys87) Polyclonal Antibody

### Description

<b>Product type</b>	Primary Antibody
<b>Code</b>	BT-AP01649
<b>Host</b>	Rabbit
<b>Isotype</b>	IgG
<b>Size</b>	20ul, 50ul, 100ul
<b>Immunogen</b>	Synthesized acetyl-peptide derived from human Stat3 around the acetylation site of K87.
<b>Mol wt</b>	N/A
<b>Species reactivity</b>	Human, Mouse, Rat
<b>Clonality</b>	Polyclonal
<b>Recommended application</b>	WB, ELISA
<b>Concentration</b>	1 mg/ml
<b>Full name</b>	Signal transducer and activator of transcription 3
<b>Synonyms</b>	Signal transducer and activator of transcription 3; STAT3; APRF; Signal transducer and activator of transcription 3; Acute-phase response factor

**This product is for research use only, not for use in human, therapeutic or diagnostic procedure.**

### Background

The protein encoded by this gene is a member of the STAT protein family. In response to cytokines and growth factors| STAT family members are phosphorylated by the receptor associated kinases| and then form homo- or heterodimers that translocate to the cell nucleus where they act as transcription activators. This protein is activated through phosphorylation in response to various cytokines and growth factors including IFN| EGF| IL5| IL6| HGF| LIF and BMP2. This protein mediates the expression of a variety of genes in response to cell stimuli| and thus plays a key role in many cellular processes such as cell growth and apoptosis. The small GTPase Rac1 has been shown to bind and regulate the activity of this protein. PIAS3 protein is a specific inhibitor of this protein. Mutations in this gene are associated with infantile-onset multisystem autoimmune disease and hyper

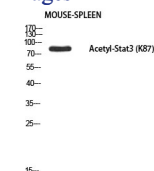
### Recommended Dilution

WB: 1: 500 - 1: 2000

ELISA: 1: 10000

Not yet tested in other applications.

### Images



Western blot analysis of MOUSE-SPLEEN using Acetyl-Stat3 (K87) antibody. Antibody was diluted at 1:500.  
Secondary antibody was diluted at 1:20000

### Storage

-20°C for 1 year