

Cdx2 Polyclonal Antibody

Description

Product type	Primary Antibody
Code	BT-AP01651
Host	Rabbit
Isotype	IgG
Size	20ul, 50ul, 100ul
Immunogen	Synthetic peptide from human protein at AA range: 201-250
Mol wt	33520
Species reactivity	Human, Rat
Clonality	Polyclonal
Recommended application	WB, ELISA
Concentration	1 mg/ml
Full name	Cdx2 Antibody
Synonyms	CDX2 CDX3

This product is for research use only, not for use in human, therapeutic or diagnostic procedure.

Background

CDX2 (caudal type homeobox 2) is a member of the caudal-related homeobox transcription factor gene family. The encoded protein is a major regulator of intestine-specific genes involved in cell growth and differentiation. This protein also plays a role in early embryonic development of the intestinal tract. Aberrant expression of CDX2 is associated with intestinal inflammation and tumorigenesis.

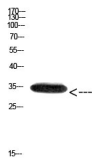
Recommended Dilution

WB: 1: 500 - 2000

ELISA: 1: 10000 - 20000

Not yet tested in other applications.

Images



Western Blot analysis of MOUSE-BRIAN cells using Antibody diluted at 2000. Secondary antibody was diluted at 1:20000 cells nucleus.

Storage

-20°C for one year