

Cdx2 Polyclonal Antibody

Description

Product type	Primary Antibody
Code	BT-AP01653
Host	Rabbit
Isotype	IgG
Size	20ul, 50ul, 100ul
Immunogen	The antiserum was produced against synthesized peptide derived from human CDX2. AA range:249-298
Mol wt	33520
Species reactivity	Human, Mouse, Rat
Clonality	Polyclonal
Recommended application	WB, ELISA
Concentration	1 mg/ml
Full name	Cdx2 Antibody
Synonyms	CDX2; CDX3; Homeobox protein CDX-2; CDX-3; Caudal-type homeobox protein 2

This product is for research use only, not for use in human, therapeutic or diagnostic procedure.

Background

CDX2 (caudal type homeobox 2) is a member of the caudal-related homeobox transcription factor gene family. The encoded protein is a major regulator of intestine-specific genes involved in cell growth and differentiation. This protein also plays a role in early embryonic development of the intestinal tract. Aberrant expression of CDX2 is associated with intestinal inflammation and tumorigenesis.

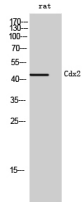
Recommended Dilution

WB: 1: 500 - 1: 2000

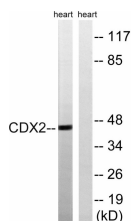
ELISA: 1: 5000

Not yet tested in other applications.

Images



Western Blot analysis of rat cells using Cdx2 Polyclonal Antibody cells nucleus.



Western blot analysis of lysates from rat heart, using CDX2 Antibody. The lane on the right is blocked with the synthesized peptide.

Storage

-20°C for one year

