

## CEACAM21 Polyclonal Antibody

### Description

<b>Product type</b>	Primary Antibody
<b>Code</b>	BT-AP01662
<b>Host</b>	Rabbit
<b>Isotype</b>	IgG
<b>Size</b>	20ul, 50ul, 100ul
<b>Immunogen</b>	The antiserum was produced against synthesized peptide derived from human CEACAM21. AA range:171-220
<b>Mol wt</b>	32373
<b>Species reactivity</b>	Human
<b>Clonality</b>	Polyclonal
<b>Recommended application</b>	WB, ELISA
<b>Concentration</b>	1 mg/ml
<b>Full name</b>	CEACAM21 Antibody
<b>Synonyms</b>	CEACAM21; Carcinoembryonic antigen-related cell adhesion molecule 21

This product is for research use only, not for use in human, therapeutic or diagnostic procedure.

### Background

CEACAM21 (Carcinoembryonic Antigen Related Cell Adhesion Molecule 21) is a Protein Coding gene. An important paralog of this gene is CEACAM8.

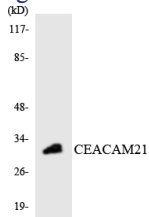
### Recommended Dilution

WB: 1: 500 - 1: 2000

ELISA: 1: 10000

Not yet tested in other applications.

### Images



Western blot analysis of the lysates from HT-29 cells using CEACAM21 antibody.

### Storage

-20°C for one year