

Stat3 Polyclonal Antibody

Description

Product type	Primary Antibody
Code	BT-AP01663
Host	Rabbit
Isotype	IgG
Size	20ul, 50ul, 100ul
Immunogen	The antiserum was produced against synthesized peptide derived from human STAT3. AA range:694-743
Mol wt	88068
Species reactivity	Human, Mouse, Rat
Clonality	Polyclonal
Recommended application	WB, IHC-p, IF, ICC, ELISA
Concentration	1 mg/ml
Full name	Signal transducer and activator of transcription 3
Synonyms	Signal transducer and activator of transcription 3; STAT3; APRF; Signal transducer and activator of transcription 3; Acute-phase response factor

This product is for research use only, not for use in human, therapeutic or diagnostic procedure.

Background

The protein encoded by this gene is a member of the STAT protein family. In response to cytokines and growth factors| STAT family members are phosphorylated by the receptor associated kinases| and then form homo- or heterodimers that translocate to the cell nucleus where they act as transcription activators. This protein is activated through phosphorylation in response to various cytokines and growth factors including IFN γ | EGF| IL5| IL6| HGF| LIF and BMP2. This protein mediates the expression of a variety of genes in response to cell stimuli| and thus plays a key role in many cellular processes such as cell growth and apoptosis. The small GTPase Rac1 has been shown to bind and regulate the activity of this protein. PIAS3 protein is a specific inhibitor of this protein. Mutations in this gene are associated with infantile-onset multisystem autoimmune disease and hyper

Recommended Dilution

WB: 1: 500 - 1: 2000

IHC-p: 1: 100 - 1: 300

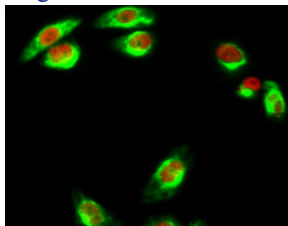
IF: 1: 200 - 1: 1000

ICC: 1: 200 - 1: 1000

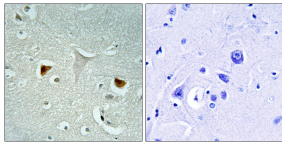
ELISA: 1: 10000

Not yet tested in other applications.

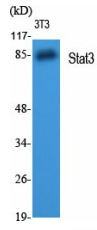
Images



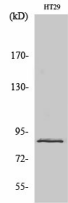
Immunofluorescence analysis of HeLa cell. 1,Stat3 Polyclonal Antibody(Red) was diluted at 1:200(4°C overnight). Caspase-8 Monoclonal Antibody(2G12)(Green) was diluted at 1:200(4°C overnight).



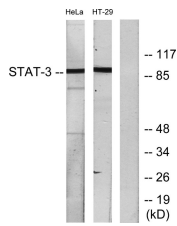
Immunohistochemistry analysis of paraffin-embedded human brain tissue, using STAT3 Antibody.
The picture on the right is blocked with the synthesized peptide.



Western Blot analysis of various cells using Stat3 Polyclonal Antibody diluted at 1:2000



Western Blot analysis of NIH-3T3 cells using Stat3 Polyclonal Antibody diluted at 1:2000



Western blot analysis of lysates from HeLa and HT-29 cells, using STAT3 Antibody. The lane on the right is blocked with the synthesized peptide.

Storage

-20°C for 1 year

501 Changsheng S Rd, Nanhu Dist, Jiaxing, Zhejiang, China

Tel: 86 21 31007137 | E-mail: save@bt-laboratory.com | www.bt-laboratory.com