

## CEP152 Polyclonal Antibody

### Description

Product type	Primary Antibody
Code	BT-AP01693
Host	Rabbit
Isotype	IgG
Size	20ul, 50ul, 100ul
Immunogen	The antiserum was produced against synthesized peptide derived from human CEP152. AA range:841-890
Mol wt	147345
Species reactivity	Human, Mouse
Clonality	Polyclonal
Recommended application	WB, IHC-p, ELISA
Concentration	1 mg/ml
Full name	CEP152 Antibody
Synonyms	CEP152; KIAA0912; Centrosomal protein of 152 kDa; Cep152

This product is for research use only, not for use in human, therapeutic or diagnostic procedure.

### Background

CEP152 encodes a protein that is thought to be involved with centrosome function. Mutations in this gene have been associated with primary microcephaly (MCPH4). Alternative splicing results in multiple transcript variants.

### Recommended Dilution

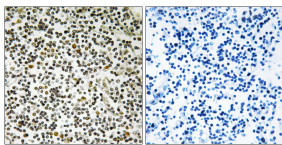
WB: 1: 500 - 1: 2000

IHC: 1: 100 - 1: 300

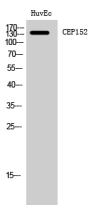
ELISA: 1: 40000

Not yet tested in other applications.

### Images



Immunohistochemistry analysis of paraffin-embedded human lymph node tissue, using CEP152 Antibody. The picture on the right is blocked with the synthesized peptide.



Western Blot analysis of HuvEc cells using CEP152 Polyclonal Antibody

### Storage

-20°C for one year