

## CEP170 Polyclonal Antibody

### Description

<b>Product type</b>	Primary Antibody
<b>Code</b>	BT-AP01694
<b>Host</b>	Rabbit
<b>Isotype</b>	IgG
<b>Size</b>	20ul, 50ul, 100ul
<b>Immunogen</b>	The antiserum was produced against synthesized peptide derived from human CEP170. AA range:701-750
<b>Mol wt</b>	175293
<b>Species reactivity</b>	Human
<b>Clonality</b>	Polyclonal
<b>Recommended application</b>	WB, IHC-p, ELISA
<b>Concentration</b>	1 mg/ml
<b>Full name</b>	CEP170 Antibody
<b>Synonyms</b>	CEP170; FAM68A; KAB; KIAA0470; Centrosomal protein of 170 kDa; Cep170; KARP-1-binding protein; KARP1-binding protein

**This product is for research use only, not for use in human, therapeutic or diagnostic procedure.**

### Background

The product of CEP170 is a component of the centrosome, a non-membraneous organelle (centrosomal protein 170) that functions as the major microtubule-organizing center in animal cells. During interphase, the encoded protein localizes to the sub-distal appendages of mature centrioles, which are microtubule-based structures thought to help organize centrosomes. During mitosis, the protein associates with spindle microtubules near the centrosomes. The protein interacts with and is phosphorylated by polo-like kinase 1, and functions in maintaining microtubule organization and cell morphology. The human genome contains a putative transcribed pseudogene. Several alternatively spliced transcript variants of CEP170 have been found, but the full-length nature of some of these variants has not been determined.

### Recommended Dilution

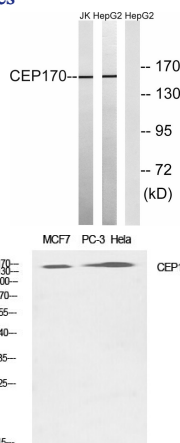
WB: 1: 500 - 1: 2000

IHC: 1: 100 - 1: 300

ELISA: 1: 40000

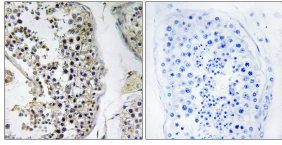
Not yet tested in other applications.

### Images

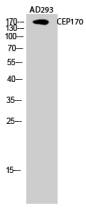


Western blot analysis of lysates from HepG2 and Jurkat cells, using CEP170 Antibody. The lane on the right is blocked with the synthesized peptide.

Western Blot analysis of various cells using CEP170 Polyclonal Antibody diluted at 1:1000



Immunohistochemistry analysis of paraffin-embedded human testis tissue, using CEP170 Antibody.  
The picture on the right is blocked with the synthesized peptide.



Western Blot analysis of AD293 cells using CEP170 Polyclonal Antibody diluted at 1:1000

### Storage

-20°C for one year

501 Changsheng S Rd, Nanhu Dist, Jiaxing, Zhejiang, China

Tel: 86 21 31007137 | E-mail: [save@bt-laboratory.com](mailto:save@bt-laboratory.com) | [www.bt-laboratory.com](http://www.bt-laboratory.com)