

## CEP350 Polyclonal Antibody

### Description

Product type	Primary Antibody
Code	BT-AP01696
Host	Rabbit
Isotype	IgG
Size	20ul, 50ul, 100ul
Immunogen	The antiserum was produced against synthesized peptide derived from human CEP35. AA range:671-720
Mol wt	350930
Species reactivity	Human
Clonality	Polyclonal
Recommended application	IHC-p, ELISA
Concentration	1 mg/ml
Full name	CEP350 Antibody
Synonyms	CEP350; CAP350; KIAA0480; GM133; Centrosome-associated protein 350; Cep350; Centrosome-associated protein of 350 kDa

This product is for research use only, not for use in human, therapeutic or diagnostic procedure.

### Background

The product of CEP350 (centrosomal protein 350) is a large protein with a CAP-Gly domain typically found in cytoskeleton-associated proteins. The encoded protein primarily localizes to the centrosome, a non-membraneous organelle that functions as the major microtubule-organizing center in animal cells. The encoded protein directly interacts with another large centrosomal protein and is required to anchor microtubules at the centrosome. It is also implicated in the regulation of a class of nuclear hormone receptors in the nucleus. Several alternatively spliced transcript variants have been found, but their full-length nature has not been determined.

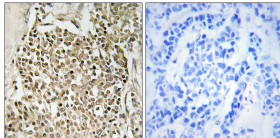
### Recommended Dilution

IHC: 1: 100 - 1: 300

ELISA: 1: 40000

Not yet tested in other applications.

### Images



Immunohistochemistry analysis of paraffin-embedded human breast carcinoma, using CEP350 Antibody. The picture on the right is blocked with the synthesized peptide.

### Storage

-20°C for one year