

CEP55 Polyclonal Antibody

Description

Product type	Primary Antibody
Code	BT-AP01698
Host	Rabbit
Isotype	IgG
Size	20ul, 50ul, 100ul
Immunogen	The antiserum was produced against synthesized peptide derived from human CEP55. AA range:81-130
Mol wt	54124
Species reactivity	Human
Clonality	Polyclonal
Recommended application	WB, IHC-p, ELISA
Concentration	1 mg/ml
Full name	CEP55 Antibody
Synonyms	CEP55; C10orf3; URCC6; Centrosomal protein of 55 kDa; Cep55; Up-regulated in colon cancer 6

This product is for research use only, not for use in human, therapeutic or diagnostic procedure.

Background

CEP55 (Centrosomal protein of 55 kDa), also known as URCC6 (Up-regulated in colon cancer 6), is a 464 amino acid protein that localizes to the centrosome during interphase and may be found throughout the cell during mitosis. Widely expressed with highest expression in testis and lower expression in thymus, bone marrow, placenta, fetal heart, digestive tract and several carcinomas, CEP55 exists as a homodimer that interacts with centrosome components and is involved in mitotic exit and cytokinesis. Human CEP55 undergoes several phosphorylation events throughout the cell cycle, most of which are necessary for proper CEP55 function. Mutations or defects in the gene encoding CEP55 result in a failure to exit mitosis and may be associated with tumor progression. Two isoforms of CEP55 are expressed due to alternative splicing events.

Recommended Dilution

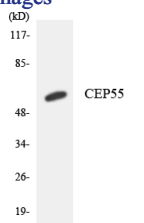
WB: 1: 500 - 1: 2000

IHC: 1: 100 - 1: 300

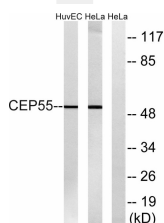
ELISA: 1: 40000

Not yet tested in other applications.

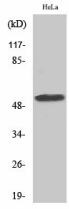
Images



Western blot analysis of the lysates from COLO205 cells using CEP55 antibody.



Western blot analysis of lysates from HeLa and HUVEC cells, using CEP55 Antibody. The lane on the right is blocked with the synthesized peptide.



Western Blot analysis of various cells using CEP55 Polyclonal Antibody

Storage

-20°C for one year

501 Changsheng S Rd, Nanhu Dist, Jiaxing, Zhejiang, China

Tel: 86 21 31007137 | E-mail: save@bt-laboratory.com | www.bt-laboratory.com