

## Tau(Phospho Thr231) Polyclonal Antibody

### Description

<b>Product type</b>	Primary Antibody
<b>Code</b>	BT-AP01701
<b>Host</b>	Rabbit
<b>Isotype</b>	IgG
<b>Size</b>	20ul, 50ul, 100ul
<b>Immunogen</b>	The antiserum was produced against synthesized peptide derived from human Tau around the phosphorylation site of Thr231.
<b>Mol wt</b>	78746
<b>Species reactivity</b>	Human, Mouse, Rat
<b>Clonality</b>	Polyclonal
<b>Recommended application</b>	WB, ELISA
<b>Concentration</b>	1 mg/ml
<b>Full name</b>	Microtubule-associated protein tau
<b>Synonyms</b>	Microtubule-associated protein tau; MAPT; MAPTL; MTBT1; TAU; Microtubule-associated protein tau; Neurofibrillary tangle protein; Paired helical filament-tau; PHF-tau

**This product is for research use only, not for use in human, therapeutic or diagnostic procedure.**

### Background

This gene encodes the microtubule-associated protein tau (MAPT) whose transcript undergoes complex| regulated alternative splicing| giving rise to several mRNA species. MAPT transcripts are differentially expressed in the nervous system| depending on stage of neuronal maturation and neuron type. MAPT gene mutations have been associated with several neurodegenerative disorders such as Alzheimer's disease| Pick's disease| frontotemporal dementia| cortico-basal degeneration and progressive supranuclear palsy.

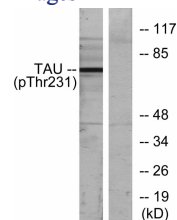
### Recommended Dilution

WB: 1: 500 - 1: 2000

ELISA: 1: 10000

Not yet tested in other applications.

### Images



Western blot analysis of lysates from MDA-MB-435 cells, using Tau (Phospho-Thr231) Antibody. The lane on the right is blocked with the phospho peptide.

### Storage

-20°C for 1 year