

CEP76 Polyclonal Antibody

Description

Product type	Primary Antibody
Code	BT-AP01704
Host	Rabbit
Isotype	IgG
Size	20ul, 50ul, 100ul
Immunogen	The antiserum was produced against synthesized peptide derived from human CEP76. AA range:251-300
Mol wt	74413
Species reactivity	Human, Mouse
Clonality	Polyclonal
Recommended application	WB, IHC-p, ELISA
Concentration	1 mg/ml
Full name	CEP76 Antibody
Synonyms	CEP76; C18orf9; Centrosomal protein of 76 kDa; Cep76

This product is for research use only, not for use in human, therapeutic or diagnostic procedure.

Background

CEP76 (centrosomal protein 76) encodes a centrosomal protein which regulates centriole amplification by limiting centriole duplication to once per cell cycle. Alternative splicing results in multiple transcript variants.

Recommended Dilution

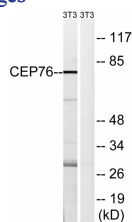
WB: 1: 500 - 1: 2000

IHC: 1: 100 - 1: 300

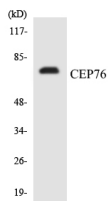
ELISA: 1: 10000

Not yet tested in other applications.

Images



Western blot analysis of lysates from NIH/3T3 cells, using CEP76 Antibody. The lane on the right is blocked with the synthesized peptide.



Western blot analysis of the lysates from HT-29 cells using CEP76 antibody.

Storage

-20°C for one year

