

CEP78 Polyclonal Antibody

Description

Product type	Primary Antibody
Code	BT-AP01705
Host	Rabbit
Isotype	IgG
Size	20ul, 50ul, 100ul
Immunogen	The antiserum was produced against synthesized peptide derived from human CEP78. AA range:301-350
Mol wt	76396
Species reactivity	Human, Mouse
Clonality	Polyclonal
Recommended application	WB, IHC-p, ELISA
Concentration	1 mg/ml
Full name	CEP78 Antibody
Synonyms	CEP78; C9orf81; Centrosomal protein of 78 kDa; Cep78

This product is for research use only, not for use in human, therapeutic or diagnostic procedure.

Background

Centrioles are core components of centrosomes, the major microtubule-organizing centers of animal cells, and act as basal bodies for cilia formation. Control of centriole number is therefore crucial for genome stability and embryogenesis. Centriole duplication requires the serine/threonine protein kinase Plk4. Cep78 is mainly a centriolar protein that localizes to the centriolar wall.

Recommended Dilution

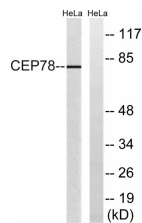
WB: 1: 500 - 1: 2000

IHC: 1: 100 - 1: 300

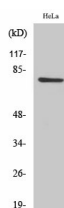
ELISA: 1: 20000

Not yet tested in other applications.

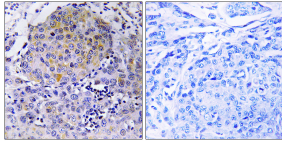
Images



Western blot analysis of lysates from HeLa cells, using CEP78 Antibody. The lane on the right is blocked with the synthesized peptide.



Western Blot analysis of various cells using CEP78 Polyclonal Antibody



Immunohistochemistry analysis of paraffin-embedded human breast carcinoma tissue, using CEP78 Antibody. The picture on the right is blocked with the synthesized peptide.

Storage

-20°C for one year

501 Changsheng S Rd, Nanhu Dist, Jiaxing, Zhejiang, China

Tel: 86 21 31007137 | E-mail: save@bt-laboratory.com | www.bt-laboratory.com