

Cep97 Polyclonal Antibody

Description

Product type	Primary Antibody
Code	BT-AP01706
Host	Rabbit
Isotype	IgG
Size	20ul, 50ul, 100ul
Immunogen	The antiserum was produced against synthesized peptide derived from human CEP97. AA range:581-630
Mol wt	96981
Species reactivity	Human, Mouse
Clonality	Polyclonal
Recommended application	WB, IHC-p, ELISA
Concentration	1 mg/ml
Full name	Cep97 Antibody
Synonyms	CEP97; LRRIQ2; Centrosomal protein of 97 kDa; Cep97; Leucine-rich repeat and IQ domain-containing protein 2

This product is for research use only, not for use in human, therapeutic or diagnostic procedure.

Background

CEP97, also named as LRRIQ2, contains one IQ domain, eight LRR (leucine-rich) repeats and one LRRCT domain. It collaborates with CEP110, being involved in the suppression of a cilia assembly program. CEP97 is required for correct spindle formation and has a role in cytokinesis. It is required for recruitment of CEP110 to the centrosome. This protein has a calculated MW ~97 kDa, although the protein migrates at a molecular weight of approximate 140 kDa. The protein is highly acidic, with a pI ~4. , providing a potential explanation for its reduced mobility in SDS-PAGE. [PMID: 17719545]. This is a rabbit polyclonal antibody raised against the C terminus of human CEP97.

Recommended Dilution

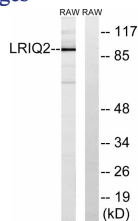
WB: 1: 500 - 1: 2000

IHC: 1: 100 - 1: 300

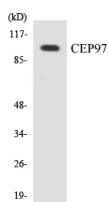
ELISA: 1: 20000

Not yet tested in other applications.

Images



Western blot analysis of lysates from RAW264.7 cells, using CEP97 Antibody. The lane on the right is blocked with the synthesized peptide.



Western blot analysis of the lysates from COLO205 cells using CEP97 antibody.

Storage

-20°C for one year

501 Changsheng S Rd, Nanhu Dist, Jiaxing, Zhejiang, China

Tel: 86 21 31007137 | E-mail: save@bt-laboratory.com | www.bt-laboratory.com