

Cerebellin 1 Polyclonal Antibody

Description

Product type	Primary Antibody
Code	BT-AP01708
Host	Rabbit
Isotype	IgG
Size	20ul, 50ul, 100ul
Immunogen	The antiserum was produced against synthesized peptide derived from human CBLN1. AA range:131-180
Mol wt	21097
Species reactivity	Human, Mouse, Rat
Clonality	Polyclonal
Recommended application	WB, ELISA
Concentration	1 mg/ml
Full name	Cerebellin 1 Antibody
Synonyms	CBLN1; Cerebellin-1; Precerebellin

This product is for research use only, not for use in human, therapeutic or diagnostic procedure.

Background

CBLN1 encodes a cerebellum-specific precursor protein, precerebellin, with similarity to the globular (non-collagen-like) domain of complement component C1qB. Precerebellin is processed to give rise to several derivatives, including the hexadecapeptide, cerebellin, which is highly enriched in postsynaptic structures of Purkinje cells. Cerebellin has also been found in human and rat adrenals, where it has been shown to enhance the secretory activity of this gland.

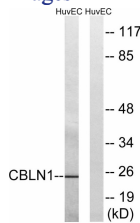
Recommended Dilution

WB: 1: 500 - 1: 2000

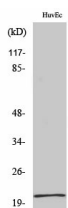
ELISA: 1: 10000

Not yet tested in other applications.

Images



Western blot analysis of lysates from HUVEC cells, using CBLN1 Antibody. The lane on the right is blocked with the synthesized peptide.



Western Blot analysis of various cells using Cerebellin 1 Polyclonal Antibody

Storage

-20°C for one year

501 Changsheng S Rd, Nanhu Dist, Jiaxing, Zhejiang, China

Tel: 86 21 31007137 | E-mail: save@bt-laboratory.com | www.bt-laboratory.com