

Cerebellin 3 Polyclonal Antibody

Description

Product type	Primary Antibody
Code	BT-AP01710
Host	Rabbit
Isotype	IgG
Size	20ul, 50ul, 100ul
Immunogen	The antiserum was produced against synthesized peptide derived from human CBLN3. AA range:131-180
Mol wt	21521
Species reactivity	Human, Mouse
Clonality	Polyclonal
Recommended application	IHC-p, WB, ELISA
Concentration	1 mg/ml
Full name	Cerebellin 3 Antibody
Synonyms	CBLN3; Cerebellin-3

This product is for research use only, not for use in human, therapeutic or diagnostic procedure.

Background

Members of the precerebellin family, such as CBLN3, contain a cerebellin motif (see CBLN1; MIM 600432) and a C-terminal C1q signature domain (see MIM 120550) that mediates trimeric assembly of atypical collagen complexes. However, precerebellins do not contain a collagen motif, suggesting that they are not conventional components of the extracellular matrix.

Recommended Dilution

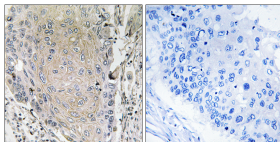
WB: 1: 500 - 2000

ELISA: 1: 40000

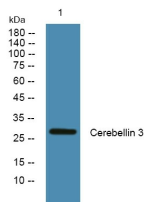
IHC: 1: 100 - 1: 300

Not yet tested in other applications.

Images



Immunohistochemistry analysis of paraffin-embedded human lung carcinoma tissue, using CBLN3 Antibody. The picture on the right is blocked with the synthesized peptide.



Western blot analysis of lysates from K562 cells, primary antibody was diluted at 1:1000, 4^oover night

Storage

-20°C for one year