

Cerebellin 4 Polyclonal Antibody

Description

Product type	Primary Antibody
Code	BT-AP01711
Host	Rabbit
Isotype	IgG
Size	20ul, 50ul, 100ul
Immunogen	The antiserum was produced against synthesized peptide derived from human CBLN4. AA range:141-190
Mol wt	21808
Species reactivity	Human, Mouse, Monkey
Clonality	Polyclonal
Recommended application	WB, IHC-p, ELISA
Concentration	1 mg/ml
Full name	Cerebellin 4 Antibody
Synonyms	CBLN4; CBLNL1; Cerebellin-4; Cerebellin-like glycoprotein 1

This product is for research use only, not for use in human, therapeutic or diagnostic procedure.

Background

CBLN4 encodes a member of a family of small secreted proteins containing C1Q domains. Members of this family are involved in regulation of neurexin signalling during synapse development. The mouse homolog of the protein encoded by CBLN4 competes with netrin to bind to the deleted in colorectal cancer receptor.

Recommended Dilution

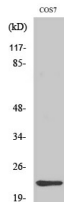
WB: 1: 500 - 1: 2000

IHC: 1: 100 - 1: 300

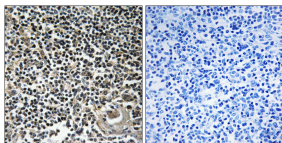
ELISA: 1: 40000

Not yet tested in other applications.

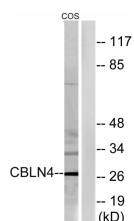
Images



Western Blot analysis of various cells using Cerebellin 4 Polyclonal Antibody



Immunohistochemistry analysis of paraffin-embedded human thymus gland tissue, using CBLN4 Antibody. The picture on the right is blocked with the synthesized peptide.



Western blot analysis of lysates from COS cells, using CBLN4 Antibody. The lane on the right is blocked with the synthesized peptide.

Storage

-20°C for one year

501 Changsheng S Rd, Nanhu Dist, Jiaxing, Zhejiang, China

Tel: 86 21 31007137 | E-mail: save@bt-laboratory.com | www.bt-laboratory.com