

Cerebral 1 Polyclonal Antibody

Description

Product type	Primary Antibody
Code	BT-AP01712
Host	Rabbit
Isotype	IgG
Size	20ul, 50ul, 100ul
Immunogen	The antiserum was produced against synthesized peptide derived from human HUCE1. AA range:271-320
Mol wt	50715
Species reactivity	Human
Clonality	Polyclonal
Recommended application	WB, IHC-p, ELISA
Concentration	1 mg/ml
Full name	Cerebral 1 Antibody
Synonyms	RRP8; KIAA0409; NML; hucep-1; Ribosomal RNA-processing protein 8; Cerebral protein 1; Nucleomethylin

This product is for research use only, not for use in human, therapeutic or diagnostic procedure.

Background

RRP8 (Ribosomal RNA Processing 8, Methyltransferase, Homolog (Yeast) is a Protein Coding gene. Diseases associated with RRP8 include bowen-conradi syndrome and lymphatic system cancer. Among its related pathways are Gene Expression and Activated PKN1 stimulates transcription of AR (androgen receptor) regulated genes KLK2 and KLK3. GO annotations related to this gene include poly(A) RNA binding and methylated histone binding. ssential component of the eNoSC (energy-dependent nucleolar silencing) complex, a complex that mediates silencing of rDNA in response to intracellular energy status and acts by recruiting histone-modifying enzymes. The eNoSC complex is able to sense the energy status of cell: upon glucose starvation, elevation of NAD(+)/NADP(+) ratio activates SIRT1, leading to histone H3 deacetylation followed by dimethylation of H3 at Lys-9 (H3K9me2) by SUV39H1 and the formation of silent chromatin in the rDNA locus. In the complex, RRP8 binds to H3K9me2 and probably acts as a methyltransferase. Its substrates are however unknown.

Recommended Dilution

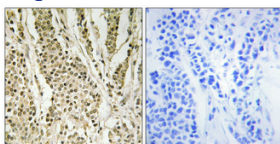
WB: 1: 500 - 1: 2000

IHC: 1: 100 - 1: 300

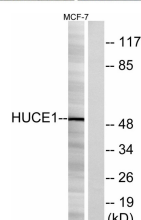
ELISA: 1: 20000

Not yet tested in other applications.

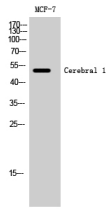
Images



Immunohistochemical analysis of paraffin-embedded Human breast cancer. Antibody was diluted at 1:100(4° overnight). High-pressure and temperature Tris-EDTA,pH8.0 was used for antigen retrieval. Negative contrl (right) obtained from antibody was pre-absorbed by immunogen peptide.



Western blot analysis of lysates from MCF-7 cells, using HUCE1 Antibody. The lane on the right is blocked with the synthesized peptide.



Western Blot analysis of MCF-7 cells using Cerebral 1 Polyclonal Antibody cells nucleus.

Storage

-20°C for one year

501 Changsheng S Rd, Nanhu Dist, Jiaxing, Zhejiang, China

Tel: 86 21 31007137 | E-mail: save@bt-laboratory.com | www.bt-laboratory.com