

## c-Fgr Polyclonal Antibody

### Description

<b>Product type</b>	Primary Antibody
<b>Code</b>	BT-AP01717
<b>Host</b>	Rabbit
<b>Isotype</b>	IgG
<b>Size</b>	20ul, 50ul, 100ul
<b>Immunogen</b>	The antiserum was produced against synthesized peptide derived from human FGR. AA range:381-430
<b>Mol wt</b>	59479
<b>Species reactivity</b>	Human
<b>Clonality</b>	Polyclonal
<b>Recommended application</b>	WB, IHC-p, ELISA
<b>Concentration</b>	1 mg/ml
<b>Full name</b>	c-Fgr Antibody
<b>Synonyms</b>	FGR; SRC2; Tyrosine-protein kinase Fgr; Gardner-Rasheed feline sarcoma viral; v-fgr) oncogene homolog; Proto-oncogene c-Fgr; p55-Fgr; p58-Fgr; p58c-Fgr

**This product is for research use only, not for use in human, therapeutic or diagnostic procedure.**

### Background

FGR is a member of the Src family of protein tyrosine kinases (PTKs). The FGR proto-oncogene, Src family tyrosine kinase contains N-terminal sites for myristylation and palmitoylation, a PTK domain, and SH2 and SH3 domains which are involved in mediating protein-protein interactions with phosphotyrosine-containing and proline-rich motifs, respectively. The protein localizes to plasma membrane ruffles, and functions as a negative regulator of cell migration and adhesion triggered by the beta-2 integrin signal transduction pathway. Infection with Epstein-Barr virus results in the overexpression of this gene. Multiple alternatively spliced variants, encoding the same protein, have been identified.

### Recommended Dilution

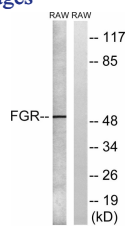
WB: 1: 500 - 1: 2000

IHC: 1: 100 - 1: 300

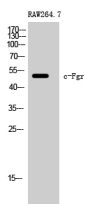
ELISA: 1: 40000

Not yet tested in other applications.

### Images



Western blot analysis of lysates from RAW264.7 cells, using FGR Antibody. The lane on the right is blocked with the synthesized peptide.



Western Blot analysis of RAW264.7 cells using c-Fgr Polyclonal Antibody

## Storage

-20°C for one year

501 Changsheng S Rd, Nanhu Dist, Jiaxing, Zhejiang, China

Tel: 86 21 31007137 | E-mail: [save@bt-laboratory.com](mailto:save@bt-laboratory.com) | [www.bt-laboratory.com](http://www.bt-laboratory.com)