

## c-Fms Polyclonal Antibody

### Description

<b>Product type</b>	Primary Antibody
<b>Code</b>	BT-AP01721
<b>Host</b>	Rabbit
<b>Isotype</b>	IgG
<b>Size</b>	20ul, 50ul, 100ul
<b>Immunogen</b>	The antiserum was produced against synthesized peptide derived from human M-CSF Receptor. AA range:691-740
<b>Mol wt</b>	107984
<b>Species reactivity</b>	Human, Mouse, Rat
<b>Clonality</b>	Polyclonal
<b>Recommended application</b>	WB, IHC-p, ELISA
<b>Concentration</b>	1 mg/ml
<b>Full name</b>	c-Fms Antibody
<b>Synonyms</b>	CSF1R; FMS; Macrophage colony-stimulating factor 1 receptor; CSF-1 receptor; CSF-1-R; CSF-1R; M-CSF-R; Proto-oncogene c-Fms; CD antigen CD115

**This product is for research use only, not for use in human, therapeutic or diagnostic procedure.**

### Background

Macrophage colony-stimulating factor 1 receptor encoded by CSF1R is the receptor for colony stimulating factor 1, a cytokine which controls the production, differentiation, and function of macrophages. This receptor mediates most if not all of the biological effects of this cytokine. Ligand binding activates the receptor kinase through a process of oligomerization and transphosphorylation. The encoded protein is a tyrosine kinase transmembrane receptor and member of the CSF1/PDGF receptor family of tyrosine-protein kinases. Mutations in this gene have been associated with a predisposition to myeloid malignancy. The first intron of this gene contains a transcriptionally inactive ribosomal protein L7 processed pseudogene oriented in the opposite direction. Alternative splicing results in multiple transcript variants.

### Recommended Dilution

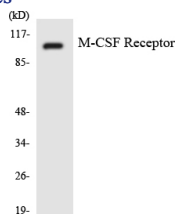
WB: 1: 500 - 1: 2000

IHC: 1: 100 - 1: 300

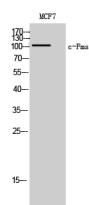
ELISA: 1: 40000

Not yet tested in other applications.

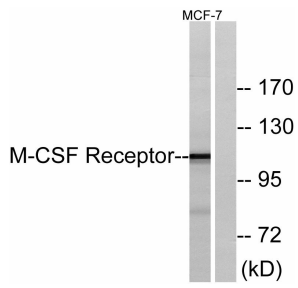
### Images



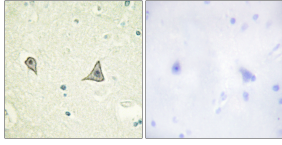
Western blot analysis of the lysates from RAW264.7 cells using M-CSF Receptor antibody.



Western Blot analysis of MCF7 cells using c-Fms Polyclonal Antibody



Western blot analysis of lysates from MCF7 cells, using M-CSF Receptor Antibody. The lane on the right is blocked with the synthesized peptide.



Immunohistochemistry analysis of paraffin-embedded human brain tissue, using M-CSF Receptor Antibody. The picture on the right is blocked with the synthesized peptide.

### Storage

-20°C for one year

501 Changsheng S Rd, Nanhu Dist, Jiaxing, Zhejiang, China

Tel: 86 21 31007137 | E-mail: [save@bt-laboratory.com](mailto:save@bt-laboratory.com) | [www.bt-laboratory.com](http://www.bt-laboratory.com)