

c-Fms Polyclonal Antibody

Description

Product type	Primary Antibody
Code	BT-AP01724
Host	Rabbit
Isotype	IgG
Size	20ul, 50ul, 100ul
Immunogen	The antiserum was produced against synthesized peptide derived from human CSFR. AA range:781-830
Mol wt	107984
Species reactivity	Human
Clonality	Polyclonal
Recommended application	WB, IHC-p, IF, ELISA
Concentration	1 mg/ml
Full name	c-Fms Antibody
Synonyms	CSF1R; FMS; Macrophage colony-stimulating factor 1 receptor; CSF-1 receptor; CSF-1-R; CSF-1R; M-CSF-R; Proto-oncogene c-Fms; CD antigen CD115

This product is for research use only, not for use in human, therapeutic or diagnostic procedure.

Background

Macrophage colony-stimulating factor 1 receptor encoded by CSF1R is the receptor for colony stimulating factor 1, a cytokine which controls the production, differentiation, and function of macrophages. This receptor mediates most if not all of the biological effects of this cytokine. Ligand binding activates the receptor kinase through a process of oligomerization and transphosphorylation. The encoded protein is a tyrosine kinase transmembrane receptor and member of the CSF1/PDGF receptor family of tyrosine-protein kinases. Mutations in this gene have been associated with a predisposition to myeloid malignancy. The first intron of this gene contains a transcriptionally inactive ribosomal protein L7 processed pseudogene oriented in the opposite direction. Alternative splicing results in multiple transcript variants.

Recommended Dilution

WB: 1: 500 - 1: 2000

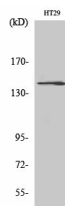
IHC: 1: 100 - 1: 300

IF: 1: 200 - 1: 1000

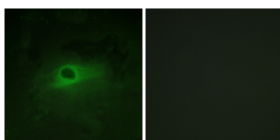
ELISA: 1: 40000

Not yet tested in other applications.

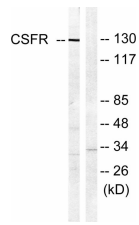
Images



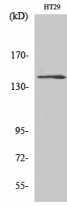
Western Blot analysis of various cells using c-Fms Polyclonal Antibody



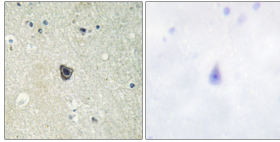
Immunofluorescence analysis of HeLa cells, using CSFR Antibody. The picture on the right is blocked with the synthesized peptide.



Western blot analysis of lysates from HT29 cells, using CSFR Antibody. The lane on the right is blocked with the synthesized peptide.



Western Blot analysis of HT29 cells using c-Fms Polyclonal Antibody



Immunohistochemistry analysis of paraffin-embedded human brain tissue, using CSFR Antibody. The picture on the right is blocked with the synthesized peptide.

Storage

-20°C for one year

501 Changsheng S Rd, Nanhu Dist, Jiaxing, Zhejiang, China

Tel: 86 21 31007137 | E-mail: save@bt-laboratory.com | www.bt-laboratory.com