

## CGI-43 Polyclonal Antibody

### Description

<b>Product type</b>	Primary Antibody
<b>Code</b>	BT-AP01735
<b>Host</b>	Rabbit
<b>Isotype</b>	IgG
<b>Size</b>	20ul, 50ul, 100ul
<b>Immunogen</b>	The antiserum was produced against synthesized peptide derived from human CG028. AA range:411-460
<b>Mol wt</b>	55866
<b>Species reactivity</b>	Human, Mouse, Monkey
<b>Clonality</b>	Polyclonal
<b>Recommended application</b>	WB, ELISA
<b>Concentration</b>	1 mg/ml
<b>Full name</b>	CGI-43 Antibody
<b>Synonyms</b>	CCZ1; C7orf28A; CGI-43; Vacuolar fusion protein CCZ1 homolog; CCZ1B; C7orf28B; Vacuolar fusion protein CCZ1 homolog B; Vacuolar fusion protein CCZ1 homolog-like

**This product is for research use only, not for use in human, therapeutic or diagnostic procedure.**

### Background

CCZ1, also known as CCZ1 vacuolar protein trafficking and biogenesis associated homolog (*S. cerevisiae*), CCZ1A, CCZ1B or CGI-43, is a 482 amino acid protein that localizes to the lysosomal membrane and belongs to the CCZ1 family. CCZ1 is encoded by a gene that maps to human chromosome 7, which houses over 1000 genes and comprises nearly 5% of the human genome. Chromosome 7 has been linked to Osteogenesis imperfecta, Pendred syndrome, Lissencephaly, Citrullinemia and Shwachman-Diamond syndrome. The deletion of a portion of the q arm of chromosome 7 is associated with Williams-Beuren syndrome, a condition characterized by mild mental retardation, an unusual comfort and friendliness with strangers and an elfin appearance. Deletions of portions of the q arm of chromosome 7 are also seen in a number of myeloid disorders including cases of acute myelogenous leukemia and myelodysplasia.

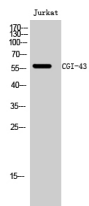
### Recommended Dilution

WB: 1: 500 - 1: 2000

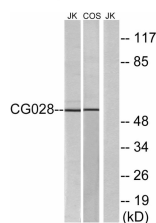
ELISA: 1: 10000

Not yet tested in other applications.

### Images



Western Blot analysis of Jurkat cells using CGI-43 Polyclonal Antibody diluted at 1:500



Western blot analysis of lysates from Jurkat and COS cells, using CG028 Antibody. The lane on the right is blocked with the synthesized peptide.

## Storage

-20°C for one year

501 Changsheng S Rd, Nanhu Dist, Jiaxing, Zhejiang, China

Tel: 86 21 31007137 | E-mail: [save@bt-laboratory.com](mailto:save@bt-laboratory.com) | [www.bt-laboratory.com](http://www.bt-laboratory.com)