

## cGKII Polyclonal Antibody

### Description

<b>Product type</b>	Primary Antibody
<b>Code</b>	BT-AP01736
<b>Host</b>	Rabbit
<b>Isotype</b>	IgG
<b>Size</b>	20ul, 50ul, 100ul
<b>Immunogen</b>	The antiserum was produced against synthesized peptide derived from human CGK 2. AA range:391-440
<b>Mol wt</b>	87432
<b>Species reactivity</b>	Human, Mouse, Rat
<b>Clonality</b>	Polyclonal
<b>Recommended application</b>	WB, IHC-p, ELISA
<b>Concentration</b>	1 mg/ml
<b>Full name</b>	cGKII Antibody
<b>Synonyms</b>	PRKG2; PRKGR2; cGMP-dependent protein kinase 2; cGK 2; cGK2; cGMP-dependent protein kinase II; cGKII

This product is for research use only, not for use in human, therapeutic or diagnostic procedure.

### Background

PRKG2 encodes a protein that belongs to the serine/threonine protein kinase family of proteins. The encoded protein (protein kinase, cGMP-dependent, type II) plays a role in the regulation of fluid balance in the intestine. A similar protein in mouse is thought to regulate differentiation and proliferation of cells in the colon. Alternate splicing results in multiple transcript variants.

### Recommended Dilution

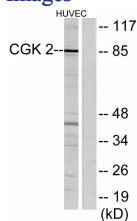
WB: 1: 500 - 1: 2000

IHC: 1: 100 - 1: 300

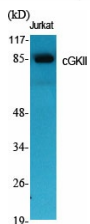
ELISA: 1: 20000

Not yet tested in other applications.

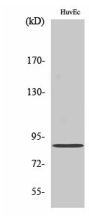
### Images



Western blot analysis of lysates from HUVEC cells, using CGK 2 Antibody. The lane on the right is blocked with the synthesized peptide.



Western Blot analysis of various cells using cGKII Polyclonal Antibody



Western Blot analysis of HuvEc cells using cGKII Polyclonal Antibody

### Storage

-20°C for one year

501 Changsheng S Rd, Nanhu Dist, Jiaxing, Zhejiang, China

Tel: 86 21 31007137 | E-mail: [save@bt-laboratory.com](mailto:save@bt-laboratory.com) | [www.bt-laboratory.com](http://www.bt-laboratory.com)