

## CGR19 Polyclonal Antibody

### Description

<b>Product type</b>	Primary Antibody
<b>Code</b>	BT-AP01739
<b>Host</b>	Rabbit
<b>Isotype</b>	IgG
<b>Size</b>	20ul, 50ul, 100ul
<b>Immunogen</b>	The antiserum was produced against synthesized peptide derived from the C-terminal region of human CGRRF1. AA range:283-332
<b>Mol wt</b>	38242
<b>Species reactivity</b>	Human
<b>Clonality</b>	Polyclonal
<b>Recommended application</b>	WB, ELISA
<b>Concentration</b>	1 mg/ml
<b>Full name</b>	CGR19 Antibody
<b>Synonyms</b>	CGRRF1; CGR19; RNF197; Cell growth regulator with RING finger domain protein 1; Cell growth regulatory gene 19 protein; RING finger protein 197

This product is for research use only, not for use in human, therapeutic or diagnostic procedure.

### Background

CGRRF1 (Cell Growth Regulator With Ring Finger Domain 1) is a Protein Coding gene. Able to inhibit growth in several cell lines.

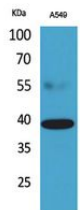
### Recommended Dilution

WB: 1: 500 - 1: 2000

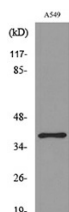
ELISA: 1: 20000

Not yet tested in other applications.

### Images



Western Blot analysis of A549 cells using CGR19 Polyclonal Antibody. Secondary antibody was diluted at 1:20000



Western blot analysis of lysate from A549 cells, using CGRRF1 Antibody.

### Storage

-20°C for one year

