

CGREF1 Polyclonal Antibody

Description

Product type	Primary Antibody
Code	BT-AP01740
Host	Rabbit
Isotype	IgG
Size	20ul, 50ul, 100ul
Immunogen	The antiserum was produced against synthesized peptide derived from human CGREF1. AA range:241-290
Mol wt	31977
Species reactivity	Human
Clonality	Polyclonal
Recommended application	WB, IHC-p, ELISA
Concentration	1 mg/ml
Full name	CGREF1 Antibody
Synonyms	CGREF1; CGR11; Cell growth regulator with EF hand domain protein 1; Cell growth regulatory gene 11 protein; Hydrophobestin

This product is for research use only, not for use in human, therapeutic or diagnostic procedure.

Background

CGREF1 (Cell Growth Regulator With EF-Hand Domain 1) is a Protein Coding gene. GO annotations related to this gene include calcium ion binding. mediates cell-cell adhesion in a calcium-dependent manner (By similarity). Able to inhibit growth in several cell lines.

Recommended Dilution

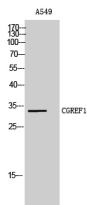
WB: 1: 500 - 1: 2000

IHC: 1: 100 - 1: 300

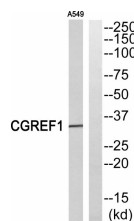
ELISA: 1: 40000

Not yet tested in other applications.

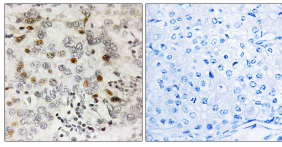
Images



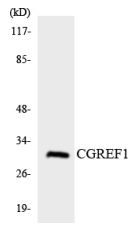
Western Blot analysis of A549 cells using CGREF1 Polyclonal Antibody



Western blot analysis of CGREF1 Antibody. The lane on the right is blocked with the CGREF1 peptide.



Immunohistochemistry analysis of paraffin-embedded human breast carcinoma, using CGREF1 Antibody. The lane on the right is blocked with the CGREF1 peptide.



Western blot analysis of the lysates from K562 cells using CGREF1 antibody.

Storage

-20°C for one year

501 Changsheng S Rd, Nanhu Dist, Jiaxing, Zhejiang, China

Tel: 86 21 31007137 | E-mail: save@bt-laboratory.com | www.bt-laboratory.com