

## CGREF1 Polyclonal Antibody

### Description

<b>Product type</b>	Primary Antibody
<b>Code</b>	BT-AP01741
<b>Host</b>	Rabbit
<b>Isotype</b>	IgG
<b>Size</b>	20ul, 50ul, 100ul
<b>Immunogen</b>	The antiserum was produced against synthesized peptide derived from the N-terminal region of human CGREF1. AA range:1-50
<b>Mol wt</b>	31977
<b>Species reactivity</b>	Human
<b>Clonality</b>	Polyclonal
<b>Recommended application</b>	WB, IHC-p, ELISA
<b>Concentration</b>	1 mg/ml
<b>Full name</b>	CGREF1 Antibody
<b>Synonyms</b>	CGREF1; CGR11; Cell growth regulator with EF hand domain protein 1; Cell growth regulatory gene 11 protein; Hydrophobestin

This product is for research use only, not for use in human, therapeutic or diagnostic procedure.

### Background

CGREF1 (Cell Growth Regulator With EF-Hand Domain 1) is a Protein Coding gene. Gene Ontology (GO) annotations related to this gene include calcium ion binding. Mediates cell-cell adhesion in a calcium-dependent manner (By similarity). Able to inhibit growth in several cell lines.

### Recommended Dilution

WB: 1: 500 - 1: 2000

IHC-p: 1: 100 - 1: 300

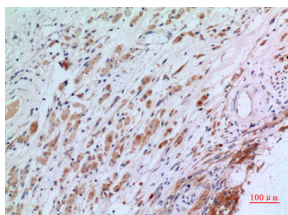
ELISA: 1: 20000

Not yet tested in other applications.

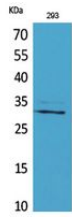
### Images



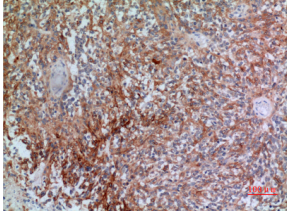
Western blot analysis of lysate from 293 cells, using CGREF1 Antibody.



Immunohistochemical analysis of paraffin-embedded human-brain, antibody was diluted at 1:100



Western Blot analysis of 293 cells using CGREF1 Polyclonal Antibody. Secondary antibody was diluted at 1:20000



Immunohistochemical analysis of paraffin-embedded human-brain, antibody was diluted at 1:100

### Storage

-20°C for one year

501 Changsheng S Rd, Nanhu Dist, Jiaxing, Zhejiang, China

Tel: 86 21 31007137 | E-mail: [save@bt-laboratory.com](mailto:save@bt-laboratory.com) | [www.bt-laboratory.com](http://www.bt-laboratory.com)