

## CHD1L Polyclonal Antibody

### Description

<b>Product type</b>	Primary Antibody
<b>Code</b>	BT-AP01746
<b>Host</b>	Rabbit
<b>Isotype</b>	IgG
<b>Size</b>	20ul, 50ul, 100ul
<b>Immunogen</b>	The antiserum was produced against synthesized peptide derived from human CHD1L. AA range:545-594
<b>Mol wt</b>	101000
<b>Species reactivity</b>	Human, Mouse
<b>Clonality</b>	Polyclonal
<b>Recommended application</b>	WB, ELISA
<b>Concentration</b>	1 mg/ml
<b>Full name</b>	CHD1L Antibody
<b>Synonyms</b>	CHD1L; ALC1; Chromodomain-helicase-DNA-binding protein 1-like; Amplified in liver cancer protein 1

This product is for research use only, not for use in human, therapeutic or diagnostic procedure.

### Background

CHD1L encodes a DNA helicase protein involved in DNA repair. The chromodomain-helicase-DNA-binding protein 1-like converts ATP to add poly(ADP-ribose) as it regulates chromatin relaxation following DNA damage. Several alternatively spliced transcripts variants have been described for this gene. CHD1L (Chromodomain Helicase DNA Binding Protein 1-Like) is a Protein Coding gene. Diseases associated with CHD1L include fibrosarcoma of bone. Among its related pathways are Chromatin Regulation / Acetylation and DNA Double-Strand Break Repair. Gene Ontology (GO) annotations related to this gene include nucleic acid binding and hydrolase activity. DNA helicase which plays a role in chromatin-remodeling following DNA damage. Targeted to sites of DNA damage through interaction with poly(ADP-ribose) and functions to regulate chromatin during DNA repair. Able to catalyze nucleosome sliding in an ATP-dependent manner. Helicase activity is strongly stimulated upon poly(ADP-ribose)-binding.

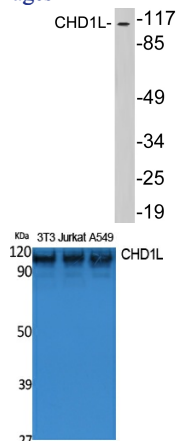
### Recommended Dilution

WB: 1: 500 - 1: 2000

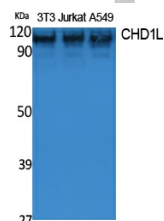
ELISA: 1: 20000

Not yet tested in other applications.

### Images



Western blot analysis of lysates from HepG2 cells, using CHD1L antibody.



Western Blot analysis of extracts from NIH-3T3, Jurkat, A549 cells, using CHD1L Polyclonal Antibody. Secondary antibody was diluted at 1:20000 cells nucleus.

## Storage

-20°C for one year

501 Changsheng S Rd, Nanhu Dist, Jiaxing, Zhejiang, China

Tel: 86 21 31007137 | E-mail: [save@bt-laboratory.com](mailto:save@bt-laboratory.com) | [www.bt-laboratory.com](http://www.bt-laboratory.com)