

Che-1 Polyclonal Antibody

Description

Product type	Primary Antibody
Code	BT-AP01752
Host	Rabbit
Isotype	IgG
Size	20ul, 50ul, 100ul
Immunogen	The antiserum was produced against synthesized peptide derived from human AATF. AA range:10-59
Mol wt	63133
Species reactivity	Human, Mouse, Rat
Clonality	Polyclonal
Recommended application	WB, IHC-p, ELISA
Concentration	1 mg/ml
Full name	Che-1 Antibody
Synonyms	AATF; CHE1; DED; HSPC277; Protein AATF; Apoptosis-antagonizing transcription factor; Rb-binding protein Che-1

This product is for research use only, not for use in human, therapeutic or diagnostic procedure.

Background

Apoptosis antagonizing transcription factor encoded by AATF was identified on the basis of its interaction with MAP3K12/DLK, a protein kinase known to be involved in the induction of cell apoptosis. AATF product contains a leucine zipper, which is a characteristic motif of transcription factors, and was shown to exhibit strong transactivation activity when fused to Gal4 DNA binding domain. Overexpression of AATF interfered with MAP3K12 induced apoptosis.

Recommended Dilution

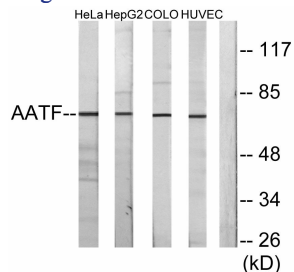
WB: 1: 500 - 1: 2000

IHC: 1: 100 - 1: 300

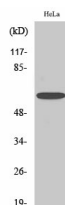
ELISA: 1: 10000

Not yet tested in other applications.

Images



Western blot analysis of lysates from HeLa cells, HepG2 cells, COLO205 cells, and HUVEC cells, using AATF Antibody. The lane on the right is blocked with the synthesized peptide.



Western Blot analysis of various cells using Che-1 Polyclonal Antibody

Storage

-20°C for one year

501 Changsheng S Rd, Nanhu Dist, Jiaxing, Zhejiang, China

Tel: 86 21 31007137 | E-mail: save@bt-laboratory.com | www.bt-laboratory.com