

ChemR23 Polyclonal Antibody

Description

Product type	Primary Antibody
Code	BT-AP01755
Host	Rabbit
Isotype	IgG
Size	20ul, 50ul, 100ul
Immunogen	The antiserum was produced against synthesized peptide derived from human CMKLR1. AA range:221-270
Mol wt	42322
Species reactivity	Human, Mouse, Rat
Clonality	Polyclonal
Recommended application	WB, IHC-p, IF, ELISA
Concentration	1 mg/ml
Full name	ChemR23 Antibody
Synonyms	CMKLR1; CHEMR23; DEZ; Chemokine-like receptor 1; G-protein coupled receptor ChemR23; G-protein coupled receptor DEZ

This product is for research use only, not for use in human, therapeutic or diagnostic procedure.

Background

The C-X3-C chemokine family is characterized by two cysteines separated by three amino acid residues. Fractalkine is a member of this chemokine family that binds CX3CR1, previously named V28, and chemokine b receptor-like 1 (CMKBRL1) with high affinity, to induce either leukocyte adhesion and migration or chemotactic functions. CX3CR1 functions with CD4 as a co-receptor for the HIV-1 virus envelope protein, and patients homozygous for a variant haplotype of CX3CR1 progress to AIDS more rapidly than those with other haplotypes. Chemokine receptor-like 1 (also designated G protein-coupled receptor DEZ or ChemR23) belongs to the G protein-coupled receptor 1 family. It is an integral membrane protein functioning as a receptor, possibly a chem-otactic peptide receptor. It also acts as a coreceptor for various SIV strains and for a primary HIV-1 strain. ChemR23 is highly expressed in developing osseous and cartilaginous tissue, brain, kidney, gastrointestinal tissues and myeloid tissue, as well as in adult parathyroid glands.

Recommended Dilution

WB: 1: 500 - 1: 2000

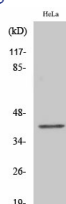
IHC: 1: 100 - 1: 300

IF: 1: 200 - 1: 1000

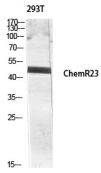
ELISA: 1: 20000

Not yet tested in other applications.

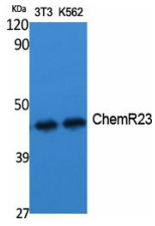
Images



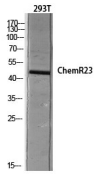
Western Blot analysis of COLO205 cells using ChemR23 Polyclonal Antibody diluted at 1:1000



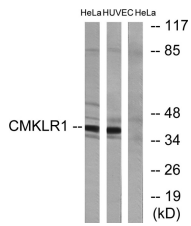
Western blot analysis of 293T lysis using ChemR23 antibody. Antibody was diluted at 1:1000



Western Blot analysis of various cells using ChemR23 Polyclonal Antibody diluted at 1:1000



Western blot analysis of 293T lysis using ChemR23 antibody. Antibody was diluted at 1:1000



Western blot analysis of lysates from HeLa and HUVEC cells, using CMKLR1 Antibody. The lane on the right is blocked with the synthesized peptide.

Storage

-20°C for one year

501 Changsheng S Rd, Nanhu Dist, Jiaxing, Zhejiang, China

Tel: 86 21 31007137 | E-mail: save@bt-laboratory.com | www.bt-laboratory.com