

Choactase Polyclonal Antibody

Description

Product type	Primary Antibody
Code	BT-AP01772
Host	Rabbit
Isotype	IgG
Size	20ul, 50ul, 100ul
Immunogen	The antiserum was produced against synthesized peptide derived from human Choactase. AA range:334-383
Mol wt	82568/74361/70394
Species reactivity	Human, Mouse, Rat
Clonality	Polyclonal
Recommended application	WB, ELISA
Concentration	1 mg/ml
Full name	Choactase Antibody
Synonyms	CHAT; Choline O-acetyltransferase; CHOACTase; ChAT; Choline acetylase

This product is for research use only, not for use in human, therapeutic or diagnostic procedure.

Background

CHAT encodes an enzyme which catalyzes the biosynthesis of the neurotransmitter acetylcholine. CHAT product (choline O-acetyltransferase) is a characteristic feature of cholinergic neurons, and changes in these neurons may explain some of the symptoms of Alzheimer's disease. Polymorphisms in CHAT have been associated with Alzheimer's disease and mild cognitive impairment. Mutations in CHAT are associated with congenital myasthenic syndrome associated with episodic apnea. Multiple transcript variants encoding different isoforms have been found for CHAT, and some of these variants have been shown to encode more than one isoform.

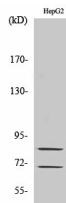
Recommended Dilution

WB: 1: 500 - 1: 2000

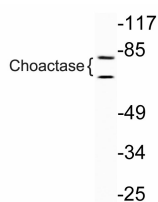
ELISA: 1: 10000

Not yet tested in other applications.

Images



Western Blot analysis of various cells using Choactase Polyclonal Antibody diluted at 1:1000



Western blot analysis of lysate from HepG2 cells, using Choactase antibody.

Storage

-20°C for one year

501 Changsheng S Rd, Nanhu Dist, Jiaxing, Zhejiang, China

Tel: 86 21 31007137 | E-mail: save@bt-laboratory.com | www.bt-laboratory.com