

CHOP Polyclonal Antibody

Description

Product type	Primary Antibody
Code	BT-AP01775
Host	Rabbit
Isotype	IgG
Size	20ul, 50ul, 100ul
Immunogen	The antiserum was produced against synthesized peptide derived from human CHOP. AA range:15-64
Mol wt	19175
Species reactivity	Human, Mouse
Clonality	Polyclonal
Recommended application	WB, IHC-p, IF, ELISA
Concentration	1 mg/ml
Full name	CHOP Antibody
Synonyms	DDIT3; CHOP; CHOP10; GADD153; DNA damage-inducible transcript 3 protein; DDIT-3; C/EBP-homologous protein; CHOP; C/EBP-homologous protein 10; CHOP-10; Growth arrest and DNA damage-inducible protein GA

This product is for research use only, not for use in human, therapeutic or diagnostic procedure.

Background

DDIT3 encodes a member of the CCAAT/enhancer-binding protein (C/EBP) family of transcription factors. DNA damage inducible transcript 3 functions as a dominant-negative inhibitor by forming heterodimers with other C/EBP members, such as C/EBP and LAP (liver activator protein), and preventing their DNA binding activity. The protein is implicated in adipogenesis and erythropoiesis, is activated by endoplasmic reticulum stress, and promotes apoptosis. Fusion of this gene and FUS on chromosome 16 or EWSR1 on chromosome 22 induced by translocation generates chimeric proteins in myxoid liposarcomas or Ewing sarcoma. Multiple alternatively spliced transcript variants encoding two isoforms with different length have been identified.

Recommended Dilution

WB: 1: 500 - 1: 2000

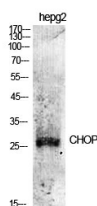
IHC: 1: 100 - 1: 300

IF: 1: 200 - 1: 1000

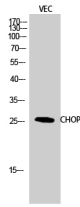
ELISA: 1: 5000

Not yet tested in other applications.

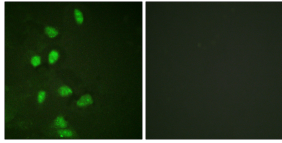
Images



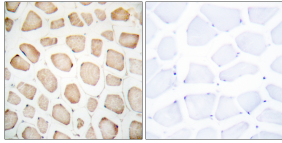
Western Blot analysis of various cells using CHOP Polyclonal Antibody diluted at 1:500



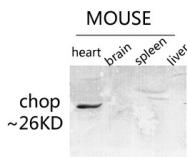
Western Blot analysis of VEC cells using CHOP Polyclonal Antibody diluted at 1:500



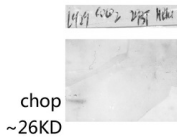
Immunofluorescence analysis of HeLa cells, using CHOP Antibody. The picture on the right is blocked with the synthesized peptide.



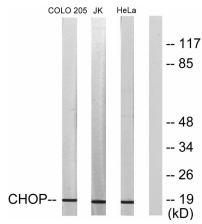
Immunohistochemistry analysis of paraffin-embedded human skeletal muscle tissue, using CHOP Antibody. The picture on the right is blocked with the synthesized peptide.



Western blot analysis of various lysis using CHOP Polyclonal Antibody diluted at 1:500. Secondary antibody was diluted at 1:20000



Western blot analysis of various lysis using CHOP Polyclonal Antibody diluted at 1:500. Secondary antibody was diluted at 1:20000



Western blot analysis of lysates from HeLa, Jurkat, and COLO205 cells, using CHOP Antibody. The lane on the right is blocked with the synthesized peptide.

Storage

-20°C for one year

501 Changsheng S Rd, Nanhu Dist, Jiaxing, Zhejiang, China

Tel: 86 21 31007137 | E-mail: save@bt-laboratory.com | www.bt-laboratory.com