

## CHP Polyclonal Antibody

### Description

Product type	Primary Antibody
Code	BT-AP01779
Host	Rabbit
Isotype	IgG
Size	20ul, 50ul, 100ul
Immunogen	Synthesized peptide derived from the Internal region of human CHP.
Mol wt	22456
Species reactivity	Human, Mouse, Rat
Clonality	Polyclonal
Recommended application	WB, ELISA
Concentration	1 mg/ml
Full name	CHP Antibody
Synonyms	CHP1; CHP; Calcineurin B homologous protein 1; Calcineurin B-like protein; Calcium-binding protein CHP; Calcium-binding protein p22; EF-hand calcium-binding domain-containing protein p22

This product is for research use only, not for use in human, therapeutic or diagnostic procedure.

### Background

CHP1 encodes a phosphoprotein that binds to the Na<sup>+</sup>/H<sup>+</sup> exchanger NHE1. Calcineurin B homologous protein 1 serves as an essential cofactor which supports the physiological activity of NHE family members and may play a role in the mitogenic regulation of NHE1. The protein shares similarity with calcineurin B and calmodulin and it is also known to be an endogenous inhibitor of calcineurin activity.

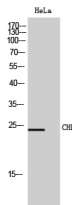
### Recommended Dilution

WB: 1: 500 - 1: 2000

ELISA: 1: 20000

Not yet tested in other applications.

### Images



Western Blot analysis of HeLa cells using CHP Polyclonal Antibody

### Storage

-20°C for one year